

CAMP SPRINGS, MARYLAND

RNAV (RNP) Y RWY 01L

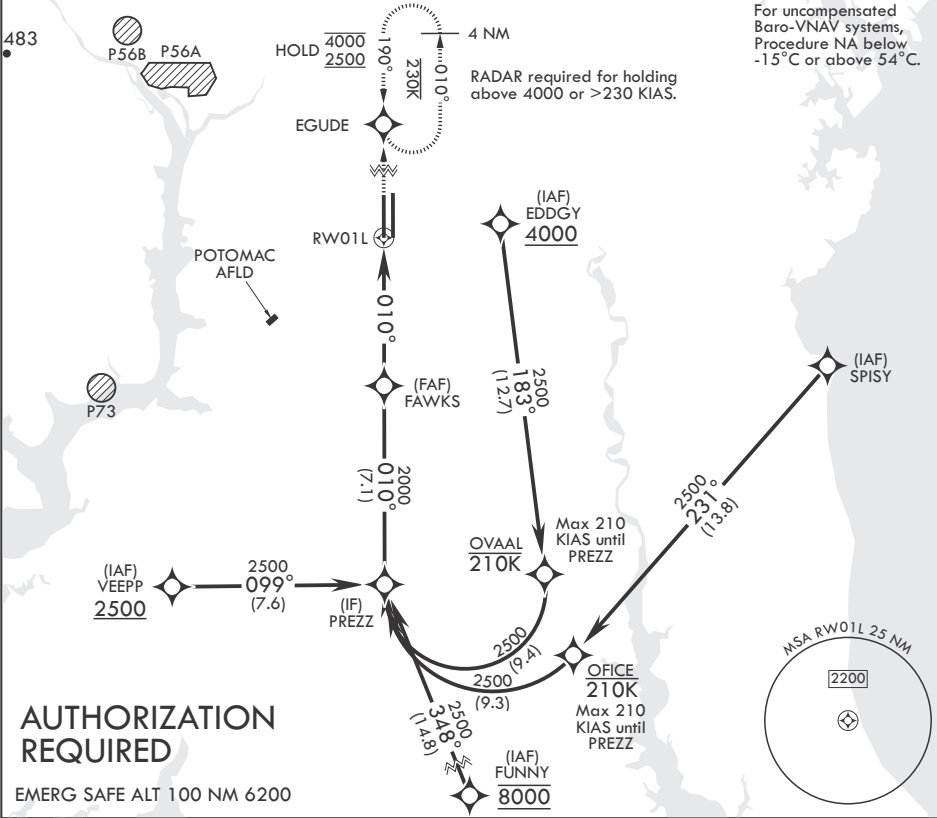
APCH CRS	Rwy Idg	9318
010°	TDZE	261
	Arpt Elev	280

-(USAF)

JOINT BASE ANDREWS (ANDREWS AFB) (KADW)

RNP AR APCH. From SPISY, EDDGY: RF.	ALSF-2
* When ALS inop, increase RVR to 55, vis to 1 mile. ** When ALS inop, increase vis to 1 3/8 miles.	MISSED APPROACH: Climb to 2500 on track 010° to EGUDE and hold.

ATIS 133.675 251.05	POTOMAC APP CON 128.0 335.5	TOWER 118.4 349.0	GND CON 121.8 275.8	CLNC DEL 127.55 285.475	CPDLC
------------------------	--------------------------------	----------------------	------------------------	----------------------------	-------



2500	EGUDE	VGSI and RNAV glidepath not coincident (VGSI Angle 3.00/TCH 72).	PREZZ	ELEV 280	TDZE 261
↑ tr 010°				BCN 483	
CATEGORY	A	B	C	D	
RNP 0.15 DA*	641/35	380	(400-5%)		
RNP 0.30 DA**	717/45	456	(500-7%)		
HIRL all Rwys TDZL/CL Rwys 1L, 19R					

CAMP SPRINGS, MARYLAND

Amdt 2 18MAY23

38°49'N - 76°52'W JOINT BASE ANDREWS (ANDREWS AFB) (KADW)

RNAV (RNP) Y RWY 01L

NE-3, 10 JUL 2025 to 07 AUG 2025

NE-3, 10 JUL 2025 to 07 AUG 2025