

CAMP SPRINGS, MARYLAND

WAAS CH 52206 W01B	APCH CRS 010°	Rwy Idg TDZE 265 Arpt Elev 280
--------------------------	------------------	--------------------------------------

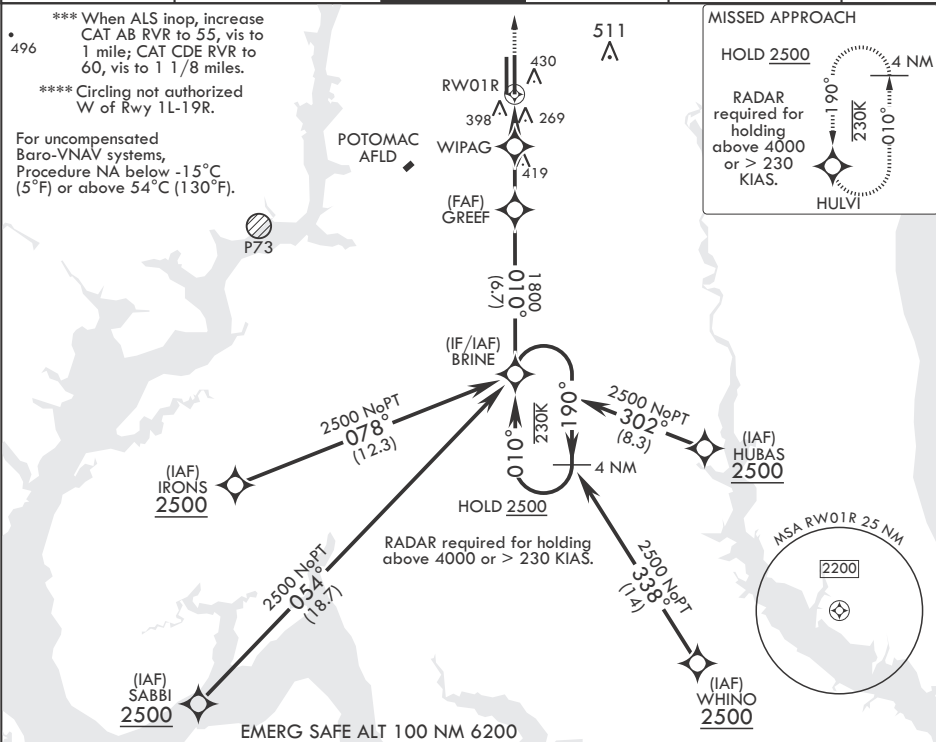
- (USAF)

# RNAV (GPS) RWY 1R

JOINT BASE ANDREWS (ANDREWS AFB) (KADW)

DME/DME RNP-0.3 NA	ALSIF-1 	MISSED APPROACH: Climb to 2500 direct HULVI and hold.
* When ALS inop, increase RVR to 40, vis to 3/4 mile. ** When ALS inop, increase RVR to 60, vis to 1 1/8 miles.		

ATIS 133.675 251.05	POTOMAC APP CON 128.0 335.5	TOWER 118.4 349.0	GND CON 121.8 275.8	CLNC DEL 127.55 285.475	CPDLC
------------------------	--------------------------------	----------------------	------------------------	----------------------------	-------



<div>4 NM Holding Pattern 2500 190° 010° BRINE 010° GREEF 1800 WIPAG 960 1.1 NM to RW01R 2.6 NM 2.1 NM GP 3.00° TCH 47</div>		<div>VGSI and RNAV glidepath not coincident (VGSI Angle 3.00/TCH 61).</div>		<div>2500 HULVI ELEV 280 TDZE 265</div>		<div>BCN 483 86 L 16 L 9318 x 200 9756 x 150 0.3% UP 252 1R 010° TWR 435 x A1</div>	
CATEGORY		A	B	C	D	E	
LPV DA*		465/24		200	(200-½)		
LNAV/VNAV DA**		660/35		395	(400-¾)		
LNAV MDA***		660/24 395 (400-½)		660/35	395	(400-¾)	
CIRCLING****		780-1 500 (500-1)		780-1½ 500 (500-1½)	840-2 560 (600-2)		

HIRL all Rwys  
TDZL/CL Rwys 1L, 19R

CAMP SPRINGS, MARYLAND

Amdt 3 18MAY23

38°49'N - 76°52'W JOINT BASE ANDREWS (ANDREWS AFB) (KADW)

# RNAV (GPS) RWY 1R

NE-3, 10 JUL 2025 to 07 AUG 2025

NE-3, 10 JUL 2025 to 07 AUG 2025