

CAMP SPRINGS, MARYLAND

## RNAV (GPS) RWY 19R

- (USAF)

JOINT BASE ANDREWS (ANDREWS AFB) (KADW)

WAAS CH <b>52204</b> W19B	APCH CRS <b>190°</b>	Rwy Idg <b>9318</b> TDZE <b>274</b> Arpt Elev <b>280</b>
---------------------------------	-------------------------	--

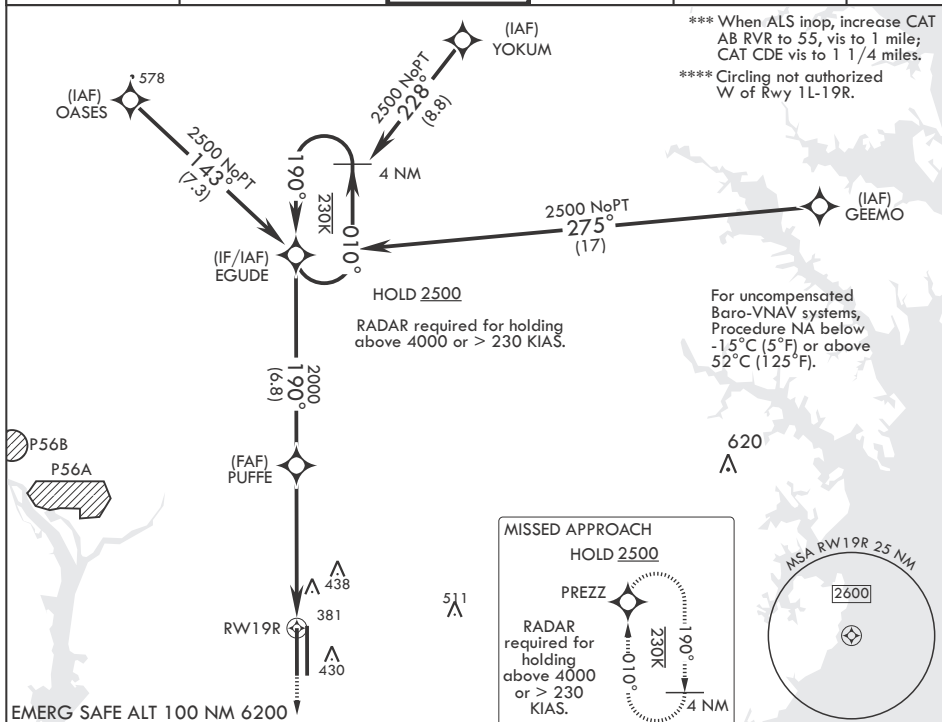
DME/DME RNP-0.3 NA
--------------------

**T** \* When ALS inop, increase RVR to 40, vis to 3/4.  
When TDZ/CL lights inop, increase RVR to 24.  
\*\* When ALS inop, increase vis to 1 1/4 miles.

ALSF-2

**MISSED APPROACH:** Climb to 2500 direct PREZZ and hold.

ATIS 133.675 251.05	POTOMAC APP CON 128.0 335.5	TOWER 118.4 349.0	GND CON 121.8 275.8	CLNC DEL 127.55 285.475	CPDLC
------------------------	--------------------------------	----------------------	------------------------	----------------------------	-------



CATEGORY	A	B	C	D	E
LPV DA*	474/18		200	(200-1/2)	
LNAV/VNAV DA**	697/40		423	(500-3/4)	
LNAV MDA***	700/24	426 (500-1/2)	700/40	426 (500-3/4)	
<b>C</b> CIRCLING****	780-1	500 (500-1)	780-1 1/2 500 (500-1 1/2)	840-2	560 (600-2)

HIRL all Rwys  
TDZL/CL Rwys 1L, 19R

CAMP SPRINGS, MARYLAND

38°49'N - 76°52'W JOINT BASE ANDREWS (ANDREWS AFB) (KADW)

Amdt 1 18MAY23

## RNAV (GPS) RWY 19R

NE-3, 10 JUL 2025 to 07 AUG 2025

NE-3, 10 JUL 2025 to 07 AUG 2025