

CAMP SPRINGS, MARYLAND

ILS or LOC RWY 1R

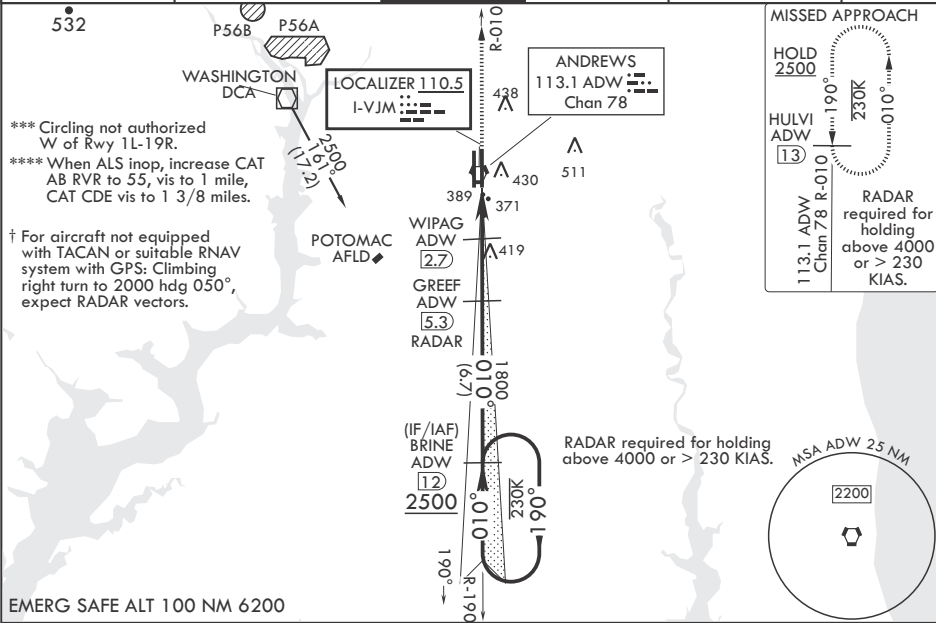
LOC I-VJM 110.5	APCH CRS 010°	Rwy Idg TDZE Arprt Elev	9756 265 280
---------------------------	-------------------------	-------------------------------	---

- (USAF)

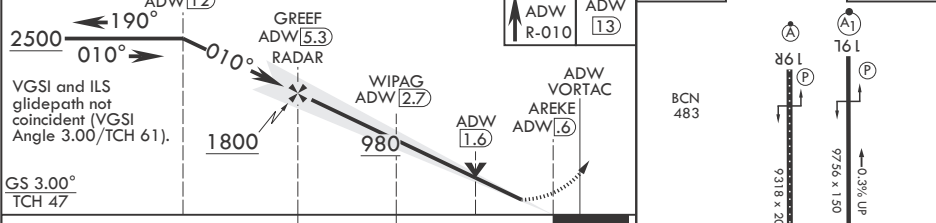
JOINT BASE ANDREWS (ANDREWS AFB) (KADW)

RADAR required RADAR or DME required at FAF	ALS-F-1 	† MISSED APPROACH: Climb to 2500 via ADW VORTAC R-010 to HULVI/ADW 13 DME and hold.
* When ALS inop, increase RVR to 40, vis to 3/4 mile. RVR 18 authorized with use of Flight Director System or Autopilot System or Heads-Up-Display to DA. ** When ALS inop, increase RVR to 55, vis to 1 mile.		

ATIS 133.675 251.05	POTOMAC APP CON 128.0 335.5	TOWER 118.4 349.0	GND CON 121.8 275.8	CLNC DEL 127.55 285.475	CPDLC
-------------------------------	---------------------------------------	-----------------------------	-------------------------------	-----------------------------------	-------



EMERG SAFE ALT 100 NM 6200



CATEGORY	A	B	C	D	E
S-ILS 1R*	465/24		200	(200-½)	
S-LOC 1R**	640/24 375 (400-½)		640/35	375 (400-¾)	
CIRCLING***	780-1 500 (500-1)		780-1½ 500 (500-1½)	840-2 560 (600-2)	
NON-DME					
S-LOC 1R****	720/24 455 (500-½)		720/45 455 (500-¾)		
CIRCLING***	780-1 500 (500-1)		780-1½ 500 (500-1½)	840-2 560 (600-2)	
HIRL all Rwys TDZL/CL Rwys 1L, 19R					
FAF to MAP 4.7 NM					
Knots 60 90 120 150 180					
Min:Sec 4:42 3:08 2:21 1:53 1:34					

CAMP SPRINGS, MARYLAND

Amdt 1 18MAY23

38°49'N - 76°52'W JOINT BASE ANDREWS (ANDREWS AFB) (KADW)

ILS or LOC RWY 1R

NE-3, 10 JUL 2025 to 07 AUG 2025

NE-3, 10 JUL 2025 to 07 AUG 2025