

CAMP SPRINGS, MARYLAND

ILS or LOC RWY 19R

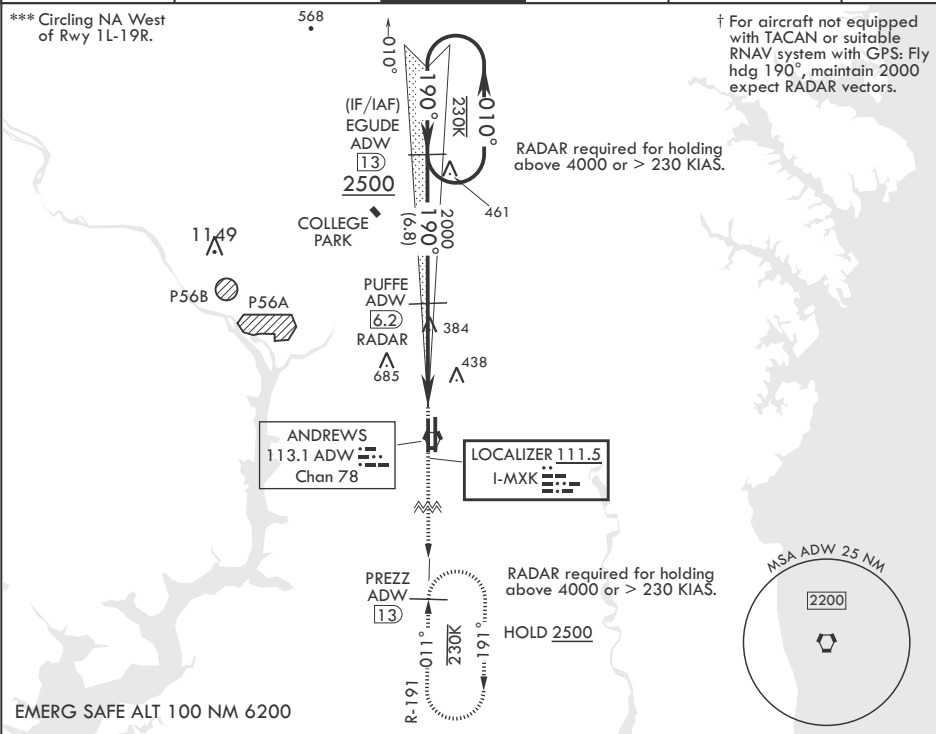
LOC I-MXK <b>111.5</b>	APCH CRS <b>190°</b>	Rwy Idg TDZE Arprt Elev	<b>9318</b> <b>274</b> <b>280</b>
---------------------------	-------------------------	-------------------------------	---

- (USAF)

JOINT BASE ANDREWS (ANDREWS AFB) (KADW)

RADAR or DME required		ALSIF-2 	† MISSED APPROACH: Climb to 2500, intercept ADW VORTAC R-191 to PREZZ and hold.
* When ALS inop, increase RVR to 40, vis to 3/4 mile. When TDZL/CL inop, increase RVR to 24. ** When ALS inop, increase CAT AB RVR to 55, vis to 1 mile, CAT CDE RVR to 60, vis to 1 1/8 miles.			

ATIS <b>133.675 251.05</b>	POTOMAC APP CON <b>128.0 335.5</b>	TOWER <b>118.4 349.0</b>	GND CON <b>121.8 275.8</b>	CLNC DEL <b>127.55 285.475</b>	CPDLC
-------------------------------	---------------------------------------	-----------------------------	-------------------------------	-----------------------------------	-------



		EGUDE ADW [13]	2500 ADW R-191	PREZZ ADW [13]	ELEV 280	TDZE 274
VGSi and ILS glidepath not coincident (VGSi Angle 3.00°/TCH 71°).		PUFFE ADW [6.2] RADAR	ADW [2.1]	ADW BARLE [1.5]	ADW VORTAC	
GS 3.00° TCH 55						
CATEGORY	A	B	C	D	E	
S-ILS 19R*	474/18		200	(200-½)		
S-LOC 19R**	660/24	386 (400-½)	660/35	386	(400-¾)	
CIRCLING***	780-1	500 (500-1)	780-1½ 500 (500-1½)	840-2	560 (600-2)	
HIRL all Rwys TDZL/CL Rwys 1L, 19R						
FAF to MAP 4.7 NM						
Knots						60 90 120 150 180
Min:Sec						4:42 3:08 2:21 1:53 1:34

CAMP SPRINGS, MARYLAND

Amtdr 4 06OCT22

38°49'N - 76°52'W JOINT BASE ANDREWS (ANDREWS AFB) (KADW)

ILS or LOC RWY 19R

NE-3, 10 JUL 2025 to 07 AUG 2025

NE-3, 10 JUL 2025 to 07 AUG 2025