

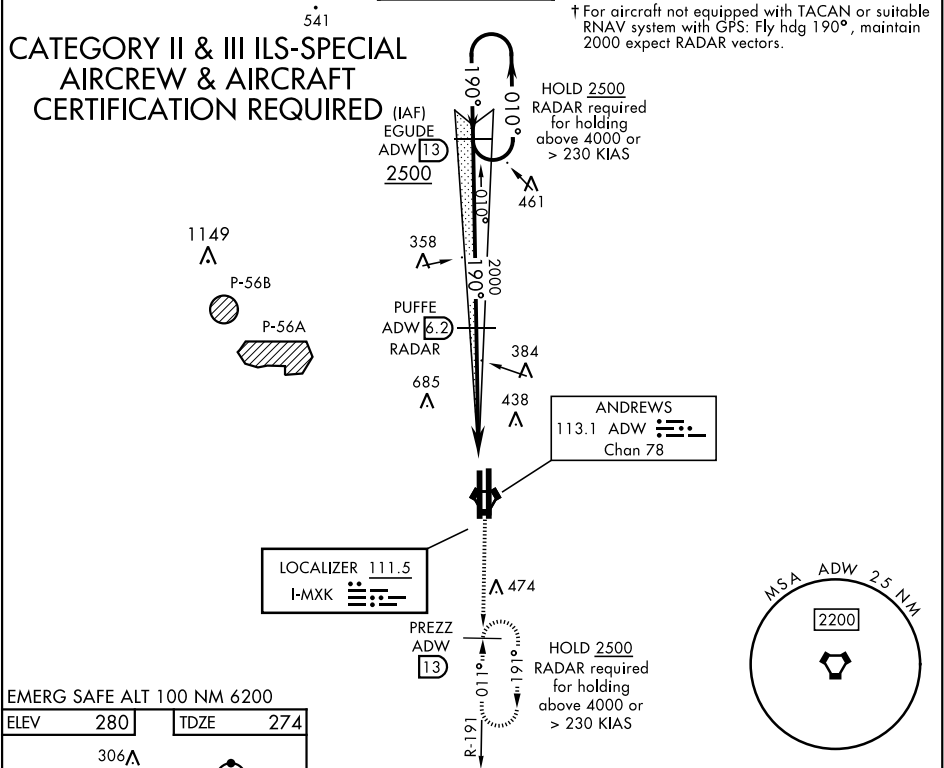
LOC I-MXK 111.5	APCH CRS 190°	Rwy Idg TDZE Arpt Elev	9318 274 280
---------------------------	-------------------------	------------------------------	---

[USAF]

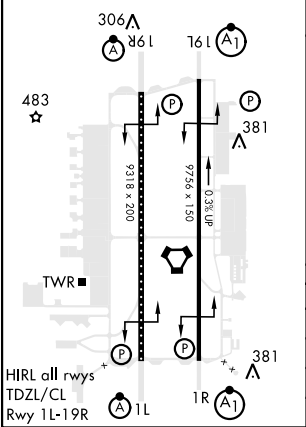
ILS RWY 19R (CAT II & III)
JOINT BASE ANDREWS (ANDREWS AFB) (KADW)

RADAR or DME required		ALSIF-2	† MISSED APPROACH: Climbing to 2500, intercept ADW VORTAC R-191 to PREZZ and hold.		
-----------------------	--	---------	---	--	--

ATIS 133.675 251.05	POTOMAC APP CON 128.0 335.5	TOWER 118.4 349.0	GND CON 121.8 275.8	CLNC DEL 127.55 285.475	CPDLC
-------------------------------	---------------------------------------	-----------------------------	-------------------------------	-----------------------------------	-------



EMERG SAFE ALT 100 NM 6200			
ELEV	280	TDZE	274



EGUDE ADW 13		PUFFE ADW 6.2		VGSI and ILS glidepath not coincident (VGSI Angle 3.00/TCH 71).		2500	PREZZ ADW R-191
190°		010°		190°		↑	13
GS 3.00°		TCH 55		5.2 NM		109°	
CATEGORY	A	B	C	D	E		
S-ILS 19R	CAT II	RA 99/12	100	DA 374			
S-ILS 19R		CAT IIIa	RVR 07				
S-ILS 19R		CAT IIIb	RVR 06				
S-ILS 19R		CAT IIIc	NA				

ILS RWY 19R (CAT II & III)

NE-3, 10 JUL 2025 to 07 AUG 2025

NE-3, 10 JUL 2025 to 07 AUG 2025