

CAMP SPRINGS ONE DEPARTURE (CAMP1.ADW) [USAF]

CAMP SPRINGS, MARYLAND

ATIS 133.675 251.05

CPDLC

GND CON

121.8 275.8

ANDREWS TOWER

118.4 349.0

POTOMAC TRACON DEP CON

118.95 257.2

554 RADAR required

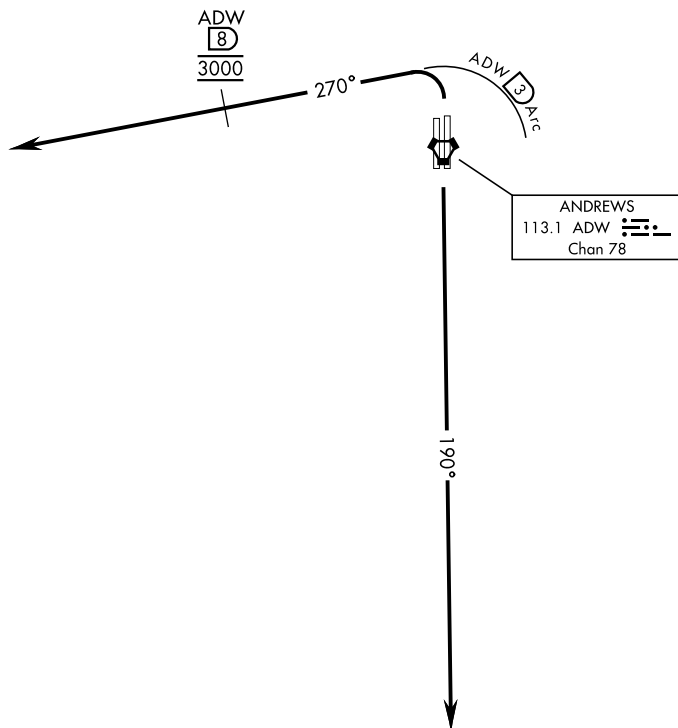
Rwy	Knots	60	120	180	240	300	360
1L/R	V/V(fpm)	380	760	1140	1520	1900	2280

ATC Climb Rate to 3000

If unable to make published climb gradient
advise ATC prior to departure.

1149
A

RADAR VECTORS REQUIRED WITHIN 10 NM FROM DEPARTURE



DEPARTURE ROUTE DESCRIPTION

TAKEOFF RWY 1L/1R: Turn left climb on heading 270° within 3 DME of ADW VORTAC, cross ADW 8 DME at 3000. Expect radar vectors.

TAKEOFF RWY 19R/19L: Climb on heading 190° to 3000. Expect radar vectors to the west.

CAMP SPRINGS ONE DEPARTURE (CAMP1.ADW)

CAMP SPRINGS, MARYLAND

JOINT BASE ANDREWS (ANDREWS AFB) (KADW)