

WAAS CH 42801 W23A	APP CRS 229°	Rwy Idg TDZE Apt Elev	5898 13 13
--	------------------------	-----------------------------	---------------------------------------

RNAV (GPS) Y RWY 23
BOCA RATON (BCT)

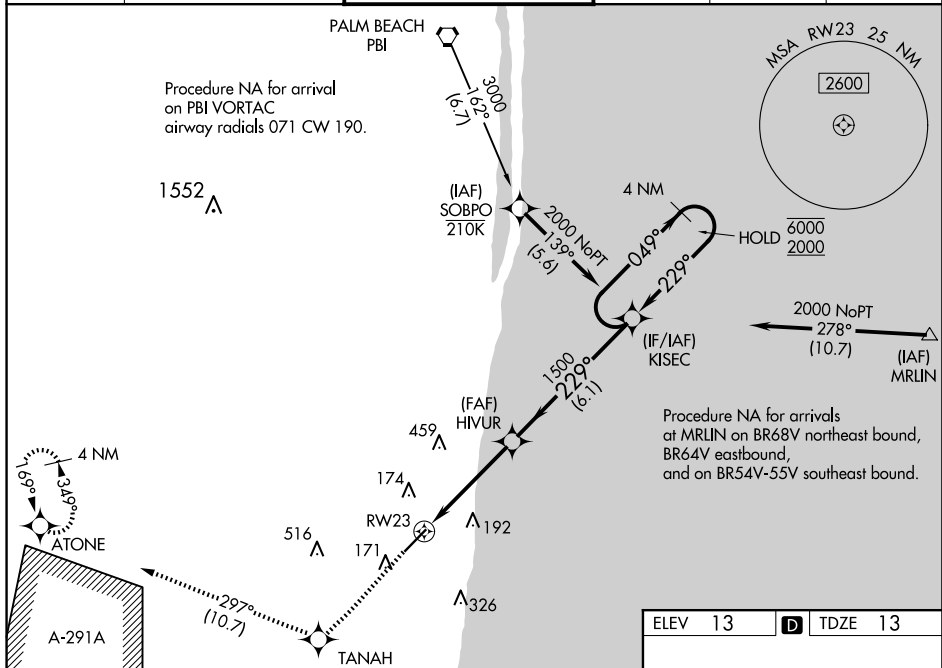
BOCA RATON (BCT)

RNP APCH.

T Rwy 23 helicopter visibility reduction below $\frac{3}{4}$ SM NA. For uncompensated Baro-VNAV systems, procedure NA below -15°C or above 54°C. In minimum visibility conditions, bright lights on highway $\frac{1}{4}$ mile north of airport may be mistaken as runway lights.

MISSED APPROACH: Climb to 2100 direct TANAH and on track 297° to ATONE and hold

AWOS-3 121.125	PALM BEACH APP CON 127.35 343.6	BOCA RATON TOWER★ 118.425 (CTAF) 0	GND CON 121.8	CLNC DEL 121.8	GCO 127.35
-------------------	------------------------------------	---------------------------------------	------------------	-------------------	---------------



2100 ↑ TANAH ATONE tr 297°

VGS1 and RNAV glidepath not coincident (VGS1 Angle 3.25/TCH 46).

4 NM Holding Pattern

KISEC

049° → 6000
← 229° 2000

HIVUR 1500

*1.3 NM to RW23

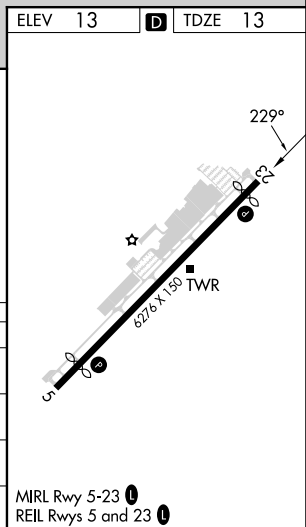
RW23

229°

1500

GP 3.00°
TCH 55

CATEGORY	A	B	C	D
LPV DA	263-7/8	250 (300-7/8)		
RNAV/ VNAV DA	357-1 1/8	344 (400-1 1/8)		
RNAV MDA	480-1 467 (500-1)	480-1 3/8 467 (500-1 3/8)		
CIRCLING	680-1 667 (700-1)	680-1 3/4 667 (700-1 3/4)	880-2 3/4 867 (900-2 3/4)	



RNAV (GPS) Y RWY 23