

APP CRS
229°

Rwy Idg
5898

TDZE
13

Apt Elev
13

RNAV (RNP) Z RWY 23

BOCA RATON (BCT)

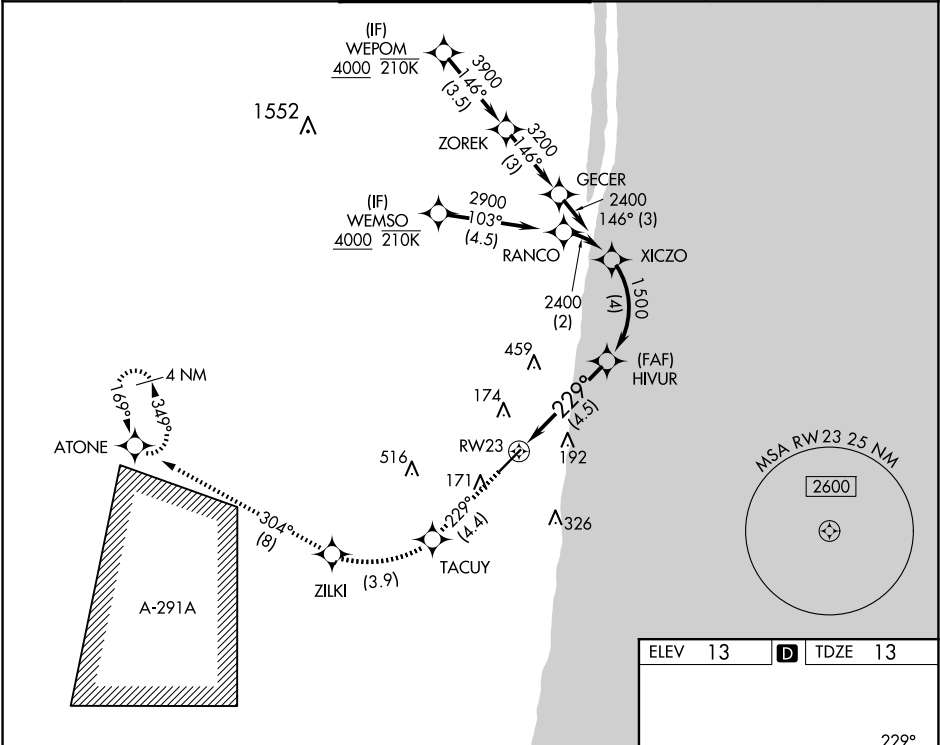
RNP AR APCH. RF Required.

▼

For uncompensated Baro-VNAV systems, procedure NA below -15°C or above 54°C. In minimum visibility conditions, bright lights on highway ¼ mile north of airport may be mistaken for runway lights.

MISSED APPROACH: Climb to 2100 on track 229° to TACUY, right turn to ZILKI and track 304° to ATONE and hold.

AWOS-3 121.125	PALM BEACH APP CON 127.35 343.6	BOCA RATON TOWER★ 118.425 (CTAF) 0	GND CON 121.8	CLNC DEL 121.8	GCO 127.35
-------------------	------------------------------------	---------------------------------------	------------------	-------------------	---------------



2100

↑

tr 229°

TACUY

ZILKI

tr 304°

ATONE

See planview for multiple IF locations.

VGSI and RNAV glidepath not coincident (VGSI Angle 3.25/TCH 46).

RW23

229°

1500

2400

GP 3.00° TCH 55

4.5 NM

4 NM

CATEGORY	A	B	C	D
RNP 0.30 DA	519-1⅓ 506 (600-1⅓)			

AUTHORIZATION REQUIRED

MIRL Rwy 5-23 0
REIL Rwys 5 and 23 0