

WAAS CH <b>82101</b> <b>W05A</b>	APP CRS <b>049°</b>	Rwy Idg TDZE Apt Elev	<b>5580</b> <b>12</b> <b>13</b>
--	------------------------	-----------------------------	---------------------------------------

RNAV (GPS) RWY 5

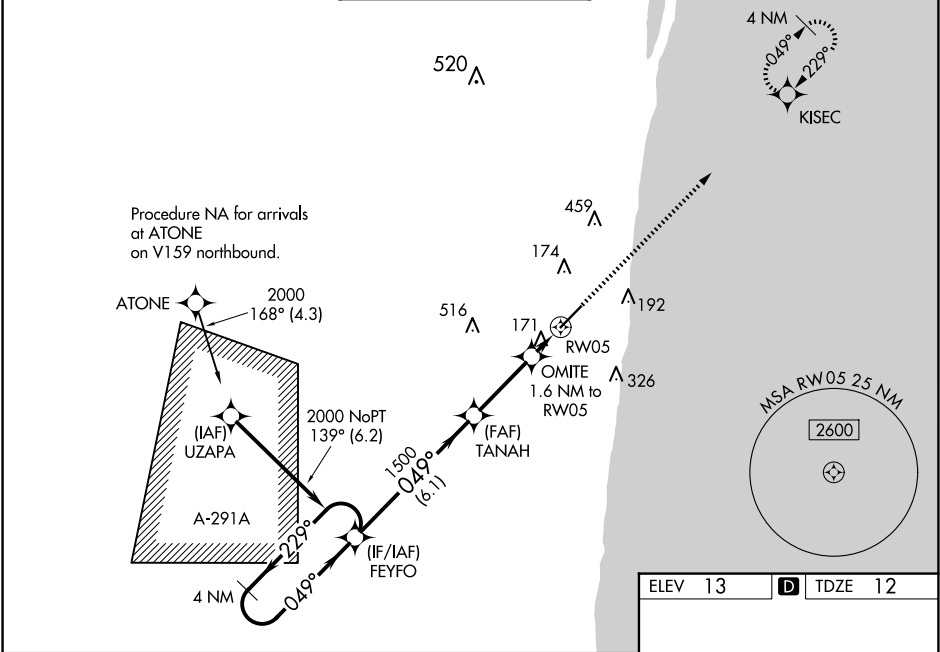
BOCA RATON (BCT')

RNP APCH-GPS.

▼ Baro-VNAV NA when using Palm Beach Intl altimeter setting. For uncompensated Baro-VNAV systems, LNAV/VNAV NA below -15°C or above 54°C. When local altimeter setting not received, use Palm Beach Intl altimeter setting: increase LPV DA to 326 feet; increase LNAV/VNAV DA to 501 feet; increase all MDAs 60 feet and visibility LNAV Cats C and D ¼ SM and Circling Cats C and D ¼ SM. In minimum visibility conditions bright lights on highway ¼ mile north of airport may be mistaken for runway lights. Rwy 5 helicopter visibility reduction below ¾ SM NA.

MISSED APPROACH:  
Climb to 2000 direct  
KISEC and hold.

AWOS-3 <b>121.125</b>	PALM BEACH APP CON <b>127.35 343.6</b>	BOCA RATON TOWER★ <b>118.425 (CTAF) 0</b>	GND CON <b>121.8</b>	CLNC DEL <b>121.8</b>	GCO <b>127.35</b>
--------------------------	---	--	-------------------------	--------------------------	----------------------



4 NM Holding Pattern		VGSI and RNAV glidepath not coincident (VGSI Angle 3.25/TCH 46).		2000	KISEC
2000		FEYFO		TANAH	OMITE
GP 3.00°		1500		1500	1.6 NM to RW05
TCH 40		6.1 NM		560	RW05
		3 NM		1.6 NM	
CATEGORY	A	B	C	D	
LPV DA	283-7/8		271 (300-7/8)		
LNAV/VNAV DA	458-13/8		446 (500-13/8)		
LNAV MDA	440-1	428 (500-1)	440-1 1/4	428 (500-1 1/4)	
CIRCLING	680-1	667 (700-1)	680-1 3/4	880-2 3/4	
			667 (700-1 3/4)	867 (900-2 3/4)	

