

WAAS  
CH **77623**  
**W30A**

APP CRS  
**301°**

Rwy Idg  
TDZE  
Apt Elev

**5635**  
**295**  
**295**

**RNAV (GPS) RWY 30**

VISALIA MUNI (VIS)

RNP APCH.

▼

▲

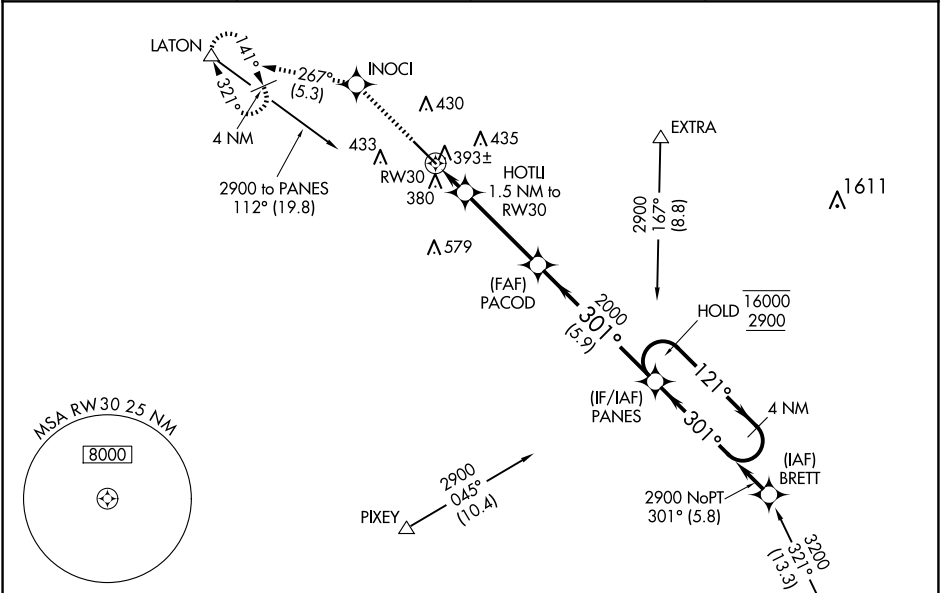
For uncompensated Baro-VNAV systems, LNAV/VNAV NA below -15°C or above 54°C. For inop ALS, increase LNAV/VNAV all Cats visibility to ¾ SM, LNAV Cats C/D to 1 SM.

MALSR

AS

MISSED APPROACH: Climb to 3000 direct INOC1 and on track 267° to LATON and hold, continue climb-in-hold to 3000.

|                            |                                |                          |                                  |
|----------------------------|--------------------------------|--------------------------|----------------------------------|
| AWOS-3PT<br><b>119.925</b> | FRESNO APP CON<br><b>118.5</b> | CLNC DEL<br><b>118.5</b> | UNICOM<br><b>123.05 (CTAF) 1</b> |
|----------------------------|--------------------------------|--------------------------|----------------------------------|



ELEV 295

**D**

TDZE 295

1

2

3

4

5

6

7

8

9

10

11

12

13

14

15

16

17

18

19

20

21

22

23

24

25

26

27

28

29

30

31

32

33

34

35

36

37

38

39

40

41

42

43

44

45

46

47

48

49

50

51

52

53

54

55

56

57

58

59

60

61

62

63

64

65

66

67

68

69

70

71

72

73

74

75

76

77

78

79

80

81

82

83

84

85

86

87

88

89

90

91

92

93

94

95

96

97

98

99

100

REIL Rwy 12 1

HIRL Rwy 12-30 1

3000

INOC1

LATON

tr

267°

△

\*LNAV only.

HOTU1

1.5 NM to RW30

\*1 NM to RW30

RW30

1 NM

0.5 NM

3.7 NM

5.9 NM

PACOD

PANES

4 NM Holding Pattern

301°

121°

16000

2900

GP 3.00°

TCH 53

| CATEGORY          | A                    | B                    | C                      | D                    |
|-------------------|----------------------|----------------------|------------------------|----------------------|
| LPV DA            | 502-½ 207 (300-½)    |                      |                        |                      |
| LNAV/VNAV DA      | 554-½ 259 (300-½)    |                      |                        |                      |
| LNAV MDA          | 660-½ 365 (400-½)    |                      | 660-⅝ 365 (400-⅝)      |                      |
| <b>C</b> CIRCLING | 720-1<br>425 (500-1) | 760-1<br>465 (500-1) | 760-1½<br>465 (500-1½) | 940-2<br>645 (700-2) |

VISALIA, CALIFORNIA

Amcl 2 15AUG19

36°19'N-119°24'W

RNAV (GPS) RWY 30

VISALIA MUNI (VIS)