

CHICO, CALIFORNIA

AL-557 (FAA)

25051

WAAS CH 77912 W31A	APP CRS 311°	Rwy Idg 6724 TDZE 226 Apt Elev 240
--	------------------------	---

RNAV (GPS) RWY 31R
CHICO RGNL (CIC)

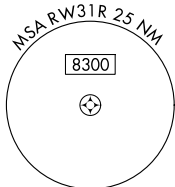
RNP APCH.

T For uncompensated Baro-VNAV systems, LNAV/VNAV NA below -15°C or above 48°C.

MISSED APPROACH: Climb to 3000 direct ZOTWY and hold.

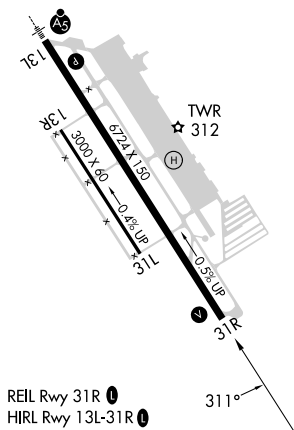
ATIS 119.675	OAKLAND CENTER 132.2 350.3	CHICO TOWER ★ 121.0 (CTAF) 0 239.3	GND CON 121.9	UNICOM 122.95
-----------------	-------------------------------	---------------------------------------	------------------	------------------

MISSED APCH FIX

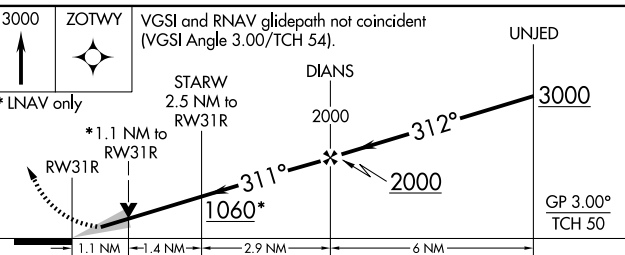


ELEV 240	D	TDZE 226
----------	----------	----------

Procedure NA for arrivals at GRIDD
on V23 and T261 southeast bound.



3000	ZOTWY	VGSI and RNAV (VGSI Angle 3.0)
------	-------	-----------------------------------



CATEGORY		A	B	C	D
LPV	DA	476-1 250 (300-1)			
LNAV/ VNAV	DA	733-1 $\frac{3}{4}$ 507 (500-1 $\frac{3}{4}$)			
LNAV	MDA	600-1 374 (400-1)			600-1 $\frac{1}{4}$ 374 (400-1 $\frac{1}{4}$)

CHICO, CALIFORNIA
Orig-D 15AUG19

39°48'N-121°52'W

CHICO RGNL (CIC)

RNAV (GPS) RWY 31R

SW-2, 10 JUL 2025 to 07 AUG 2025