

CHICO, CALIFORNIA

AL-557 (FAA)

25051

WAAS CH 65912 W13A	APP CRS 131°	Rwy Idg 6724 TDZE 240 Apt Elev 240
----------------------------------------	------------------------	---------------------------------------------------------------

RNAV (GPS) RWY 13L

CHICO RGNL (CIC)

RNP APCH.

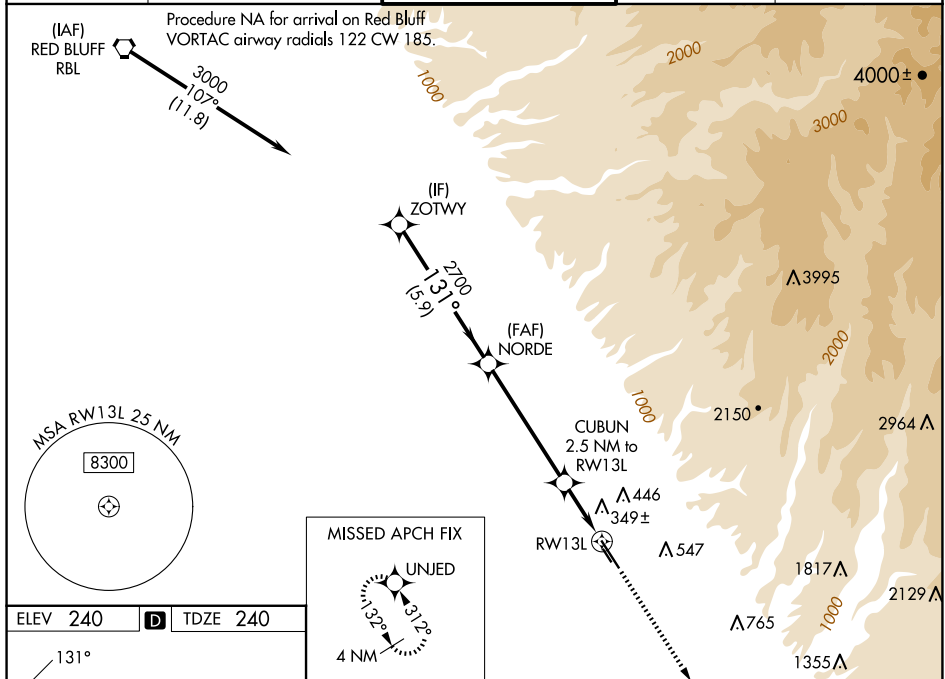
T Circling NA east of Rwy 13L-31R. For uncompensated Baro-VNAV systems, LNAV/VNAV NA below -15°C or above 54°C. For inop ALS, increase LNAV/VNAV all Cats visibility to ¾ SM, and increase LNAV Cats C/D visibility to 1 SM.

MALSR

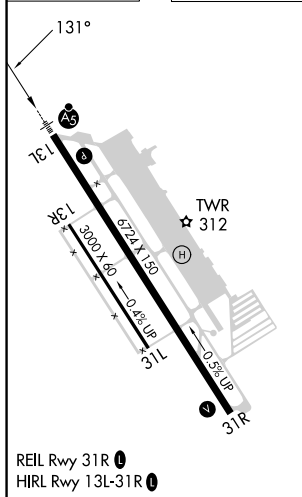


MISSED APPROACH: Climb to 3600 direct UNJED and hold, continue climb-in-hold to 3600.

ATIS 119.675	OAKLAND CENTER 132.2 350.3	CHICO TOWER ★ 121.0 (CTAF) 0 239.3	GND CON 121.9	UNICOM 122.95
-----------------	-------------------------------	---------------------------------------	------------------	------------------



ELEV 240	D	TDZE 240
----------	----------	----------



The diagram shows the ZOTWY VORTAC station at the intersection of two intersecting runways. The station is located 2700 feet from the intersection along the runway heading 131°. The distance from the station to the intersection is 2700 feet. The distance from the station to the intersection is 5.9 NM. The distance from the station to the intersection is 5.1 NM. The distance from the station to the intersection is 1.5 NM. The distance from the station to the intersection is 1 NM.

CHICO, CALIFORNIA

Amdt 1 21MAY20

39°48'N-121°52'W

CHICO RGNL (CIC)

RNAV (GPS) RWY 13L

SW-2, 10 JUL 2025 to 07 AUG 2025