
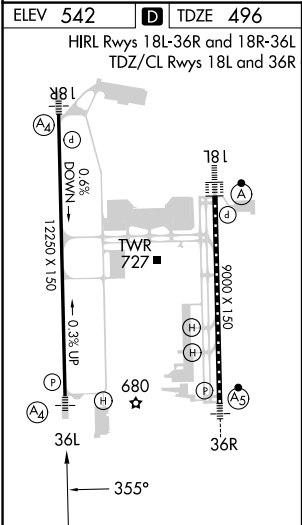
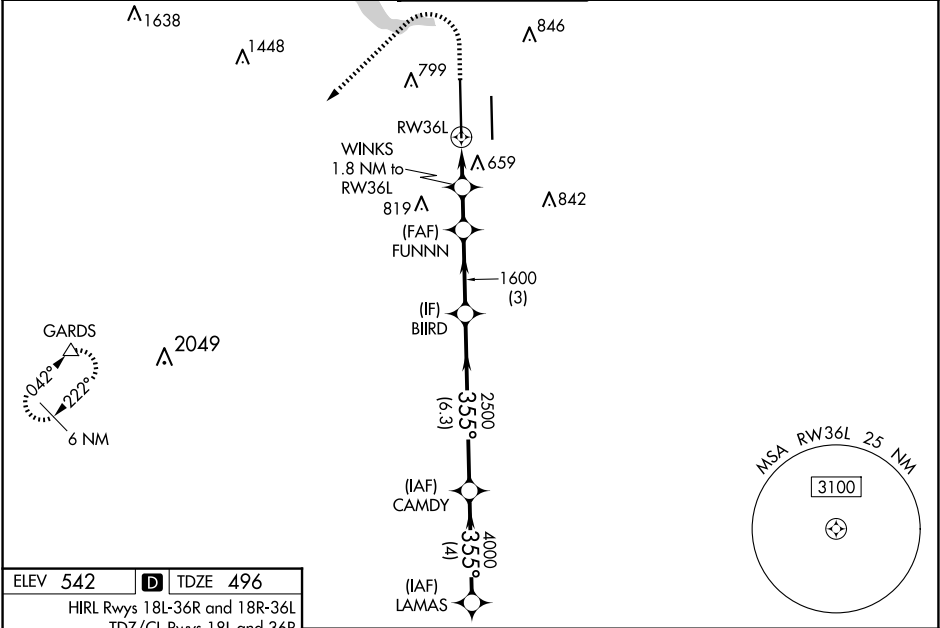


WAAS CH <b>90229</b> <b>W36A</b>	APP CRS <b>355°</b>	Rwy Idg <b>12250</b> TDZE <b>496</b> Apt Elev <b>542</b>
----------------------------------------	------------------------	----------------------------------------------------------------

RNAV (GPS) Y RWY 36L

AUSTIN-BERGSTROM INTL (AUS)

RNP APCH-GPS.			MALSP 	MISSED APPROACH: Climb to 1700 then climbing left turn to 3500 direct GARDS and hold.	
T Simultaneous approach authorized. Use of FD or AP required during simultaneous operations. LNAV procedure NA during simultaneous operations. For uncompensated Baro-VNAV systems, LNAV/VNAV NA below -5°C or above 54°C. Inop table does not apply to LPV all Cats. For inop ALS, increase LNAV/VNAV Cat E visibility to 1½ SM, LNAV Cat E visibility to 1¼ SM.					
D-ATIS 124.4	AUSTIN APP CON 127.225 317.65 (EAST) 120.875 270.25 (SOUTH) 119.0 370.85 (WEST)	AUSTIN TOWER 121.0 281.5	GND CON 121.9 348.6	CLNC DEL 125.5 263.0	CPDLC



ELEV 542 D TDZE 496		HIRL Rwy 18L-36R and 18R-36L TDZ/CL Rwy 18L and 36R				
1700		3500	GARDS	VGSI and RNAV glidepath not coincident (VGSI Angle 3.00/TCH 60).		LAMAS
1700		3500	GARDS	FUNNIN		BIIRD
1700		3500	GARDS	WINKS		CAMDY
1700		3500	GARDS	1.8 NM to RW36L		5000
1700		3500	GARDS	1.2 NM to RW36L		355°
1700		3500	GARDS	1100		4000
1700		3500	GARDS	1600		GP 3.00°
1700		3500	GARDS	2500		TCH 54
1700		3500	GARDS	1.2 NM		
1700		3500	GARDS	0.6		
1700		3500	GARDS	1.5 NM		
1700		3500	GARDS	3 NM		
1700		3500	GARDS	6.3 NM		
1700		3500	GARDS	4 NM		
CATEGORY		A	B	C	D	E
LPV DA		696/40 200 (200-¾)				
LNAV/VNAV DA		970/60 474 (500-1¼)				
LNAV MDA		920/40	424 (400-¾)	920/50	424 (400-1)	
CIRCLING		1040-1 498 (500-1)	1120-1 578 (600-1)	1200-1¾ 658 (700-1¾)	1200-2 658 (700-2)	NA

SC-3, 10 JUL 2025 to 07 AUG 2025

SC-3, 10 JUL 2025 to 07 AUG 2025