

APP CRS 355°	Rwy Idg 12250 TDZE 496 Apt Elev 542
------------------------	--

RNAV (RNP) Z RWY 36L
AUSTIN-BERGSTROM INTL (AUS)

AUSTIN-BERGSTROM INTL (AUS)

RNP AR APCH. RADAR required.

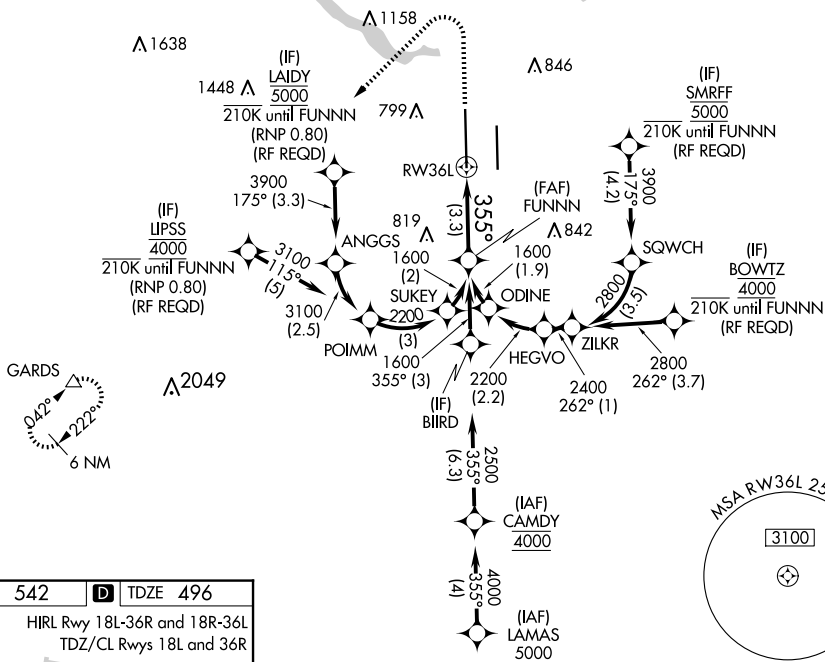
T Simultaneous approach authorized. For uncompensated Baro-VNAV systems procedure NA below -5°C or above 54°C. For inop ALS, increase RNP 0.11 all Cats visibility to RVR 4500 and RNP 0.30 all Cats visibility to RVR 5500.

MALS

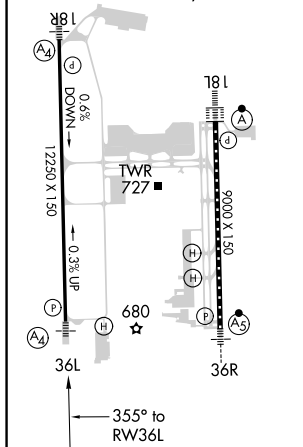


MISSED APPROACH: Climb to 1700 then climbing left turn to 3500 direct GARDS and hold.

D-ATIS	AUSTIN APP CON		AUSTIN TOWER		GND CON		CLNC DEL		CPDLC
124.4	127.225	317.65 (EAST)	121.0	281.5	121.9	348.6	125.5	263.0	
	120.875	270.25 (SOUTH)							
	119.0	370.85 (WEST)							



ELEV 542	D	TDZE 496
HIRL Rwy 18L-36R and 18R-36L TDZ/CL Rwy 18L and 36R		



1700 3500 GARDS VGSI and RNAV glidepath not coincident (VGSI Angle 3.00/TCH 60). FUNNN 1600

RW36L 355° 1600

See planview for multiple IF locations.

GP 3.00° TCH 54

3.3 NM

CATEGORY	A	B	C	D
RNP 0.11 DA	758/40 262 (300-¾)			
RNP 0.30 DA	858/40 362 (400-¾)			

AUTHORIZATION REQUIRED