

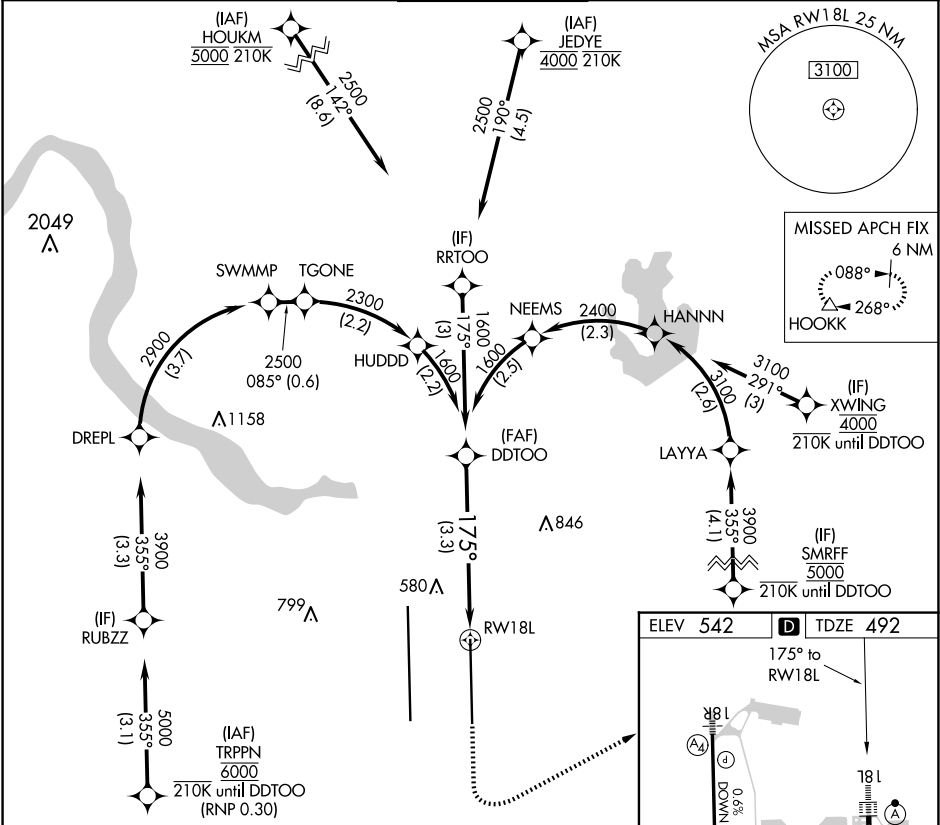
APP CRS	Rwy Idg	9000
175°	TDZE	492
	Apt Elev	542

# RNAV (RNP) Z RWY 18L

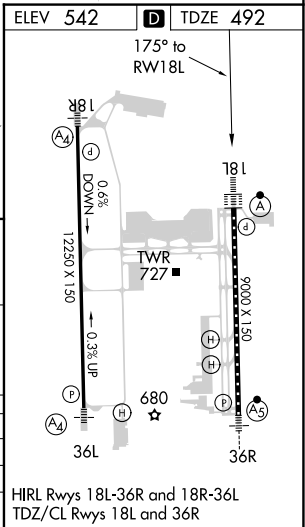
AUSTIN-BERGSTROM INTL (AUS)

RADAR required. RNP AR APCH-GPS.		ALSF-2	MISSED APPROACH: Climb to 1000 then climbing left turn to 3000 direct HOOKK and hold.
Simultaneous approach authorized. For uncompensated Baro-VNAV systems, procedure NA below -5°C or above 54°C.			

D-ATIS	AUSTIN APP CON	AUSTIN TOWER	GND CON	CLNC DEL	CPDLC
124.4	127.225 317.65 (EAST) 120.875 270.25 (SOUTH) 119.0 370.85 (WEST)	121.0 281.5	121.9 348.6	125.5 263.0	



DDTOO		VGSi and RNAV glidepath not coincident (VGSi Angle 3.00/TCH 74).		1000	3000	HOOKK
1600	1600	175°		↑	↘	△
GP 3.00° TCH 61		See planview for multiple IF locations.		RW18L		
		3.3 NM				
CATEGORY	A	B	C	D		
RNP 0.24 DA	825/26		333 (300-½)			
RNP 0.30 DA	885/35		393 (400-⅝)			
AUTHORIZATION REQUIRED						



SC-3, 10 JUL 2025 to 07 AUG 2025

SC-3, 10 JUL 2025 to 07 AUG 2025