
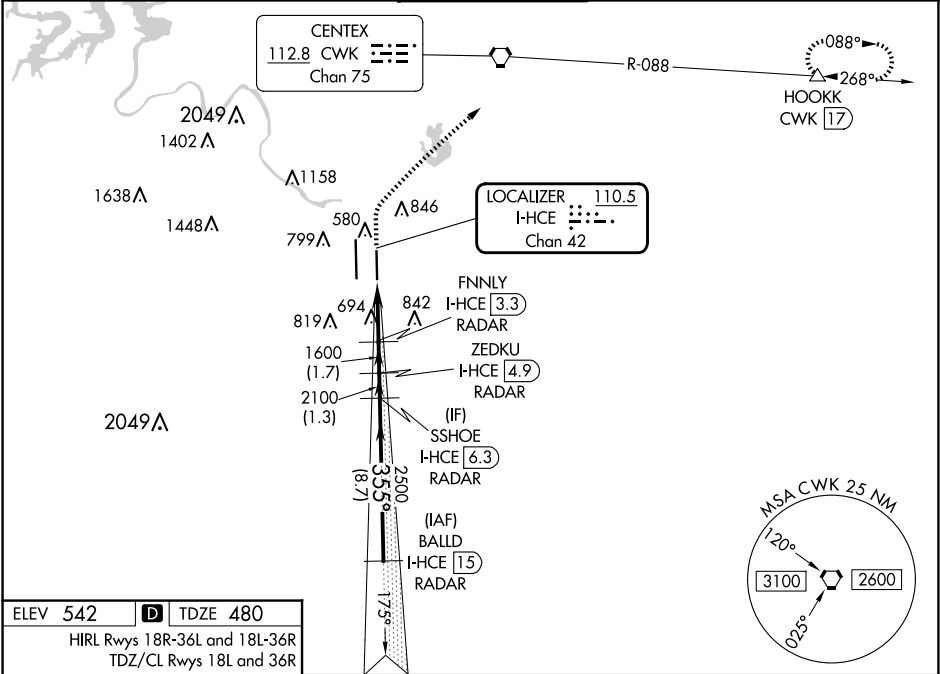


LOC/DME I-HCE 110.5 Chan 42	APP CRS 355°	Rwy Idg 9000 TDZE 480 Apt Elev 542	ILS or LOC RWY 36R AUSTIN-BERGSTROM INTL (AUS)	
---	------------------------	---	---	--

DME required. RADAR required for procedure entry.	MALSR 	MISSED APPROACH: Climb to 1000 then climbing right turn to 3000 on heading 030° and CWK VORTAC R-088 to HOOKK/CWK 17 DME and hold.
Simultaneous approach authorized. For inop ALS, increase S-ILS 36R Cat E visibility to RVR 4000, S-LOC 36R Cat C/D/E visibility to 1¾ SM.		

D-ATIS 124.4	AUSTIN APP CON 127.225 317.65 (EAST) 120.875 270.25 (SOUTH) 119.0 370.85 (WEST)	AUSTIN TOWER 121.0 281.5	GND CON 121.9 348.6	CLNC DEL 125.5 263.0	CPDLC
------------------------	---	------------------------------------	-------------------------------	--------------------------------	-------



ELEV 542 D TDZE 480 HIRL Rwy 18R-36L and 18L-36R TDZ/CL Rwy 18L and 36R	1000 3000 CWK R-088 HOOKK VGSI and ILS glidepath not coincident (VGSI Angle 3.00/TCH 59).	SSXOE I-HCE [6.3] RADAR BALLD I-HCE [15] RADAR ZEDKU I-HCE [4.9] RADAR FNNLY I-HCE [3.3] RADAR I-HCE [0.1] DME ANTENNA I-HCE [1.4] RADAR	1600 2100 2500 4000	355° GS 3.00° TCH 52
CATEGORY A B C D E				
S-ILS 36R 680/18 200 (200-½)				
S-LOC 36R 1000/24 520 (500-½) 1000/55 520 (500-1)				
CIRCLING 1040-1 498 (500-1) 1120-1 578 (600-1) 1200-1¾ 658 (700-1¾) 1200-2 658 (700-2) NA				