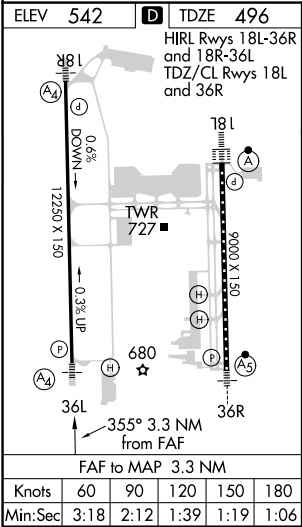
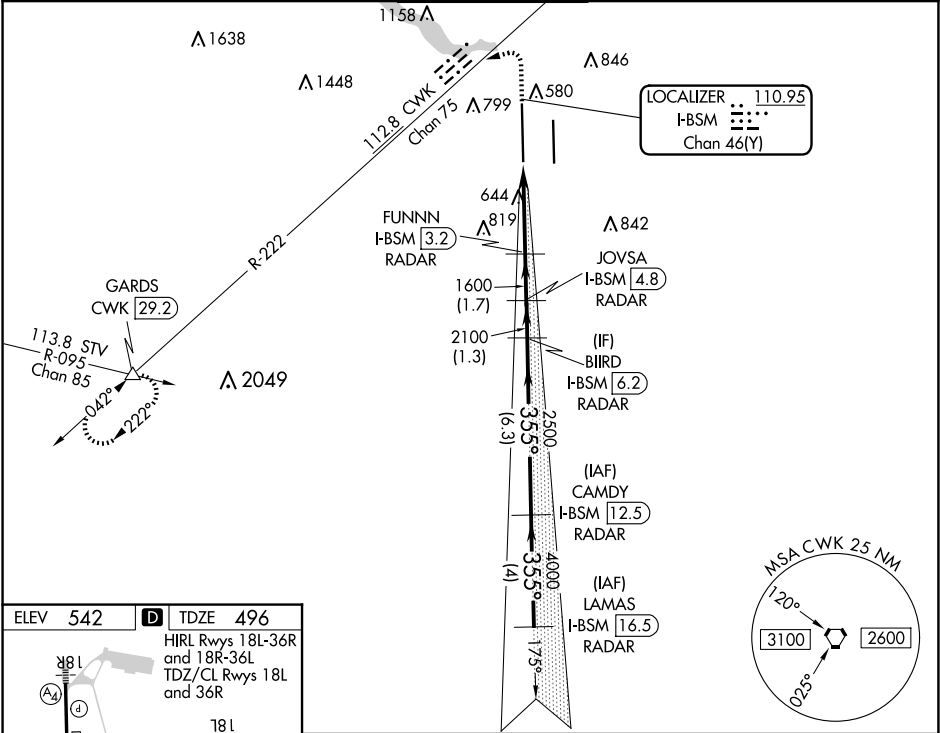


LOC/DME I-BSM	APP CRS	Rwy Idg	12250
110.95	355°	TDZE	496
Chan 46(Y)		Apt Elev	542

ILS or LOC RWY 36L
AUSTIN-BERGSTROM INTL (AUS)

DME or RADAR required.	MALS	MISSED APPROACH: Climb to 1000 then climbing left turn to 3500 on heading 250° and CWK VORTAC R-222 to GARDS INT/CWK 29.2 DME and hold.
Simultaneous approach authorized. For inop ALS, increase S-LOC 36L Cats C/D/E visibility to RVR 6000. Inop table does not apply to S-ILS 36L all Cats.	A4	

D-ATIS	AUSTIN APP CON	AUSTIN TOWER	GND CON	CLNC DEL	CPDLC
124.4	127.225 317.65 120.875 270.25 (SOUTH) 119.0 370.85 (WEST)	121.0 281.5	121.9 348.6	125.5 263.0	



1000 ↑	3500 hdg 250°	CWK R-222	GARDS △	VGSI and ILS glidepath not coincident (VGSI Angle 3.00/TCH 60).		LAMAS
I-BSM DME ANTENNA		FUNNN I-BSM RADAR	JOVSA I-BSM RADAR	BIIRD I-BSM RADAR	CAMDY I-BSM RADAR	I-BSM RADAR
I-BSM 0.2		I-BSM 0.9	I-BSM 3.2	I-BSM 4.8	I-BSM 6.2	I-BSM 12.5
1600		1600	2100	2500	4000	5000
1.1 NM		2.2 NM	1.7 NM	1.3 NM	6.3 NM	4 NM
GS 3.00° TCH 54						
CATEGORY	A	B	C	D	E	
S-ILS 36L	696/40 200 (200-¾)					
S-LOC 36L	900/40 404 (400-¾)		900/50 404 (400-1)			