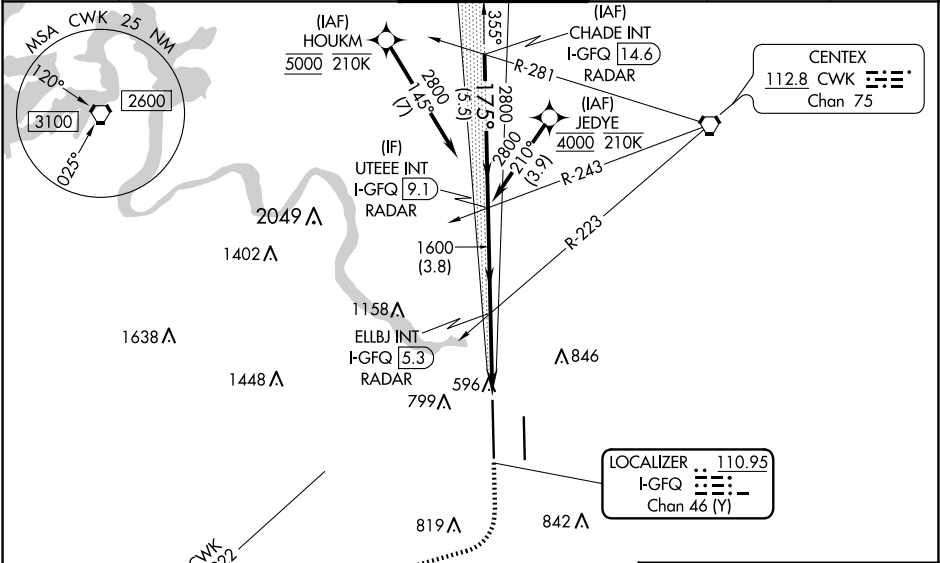


LOC/DME I-GFQ	APP CRS	Rwy Idg	12250
110.95	175°	TDZE	542
Chan 46(Y)		Apt Elev	542

ILS or LOC RWY 18R
AUSTIN-BERGSTROM INTL (AUS)

RNAV 1-GPS or RADAR required for procedure entry. From HOUKM, JEDYE: RNAV 1-GPS required.	MALS	MISSED APPROACH: Climb to 1000 then climbing right turn to 3500 on heading 250° and CWK VORTAC R-222 to GARDS INT/CWK 29.2 DME and hold.
Simultaneous approach authorized. Inop table does not apply to S-ILS 18R. For inop ALS, increase S-LOC-18R Cats C, D and E visibility to RVR 4500.	A4	

D-ATIS	AUSTIN APP CON	AUSTIN TOWER	GND CON	CLNC DEL	CPDLC
124.4	127.225 317.65 (EAST) 120.875 270.25 (SOUTH) 119.0 370.85 (WEST)	121.0 281.5	121.9 348.6	125.5 263.0	



	ELEV 542	TDZE 542
	175° 3.1 NM from FAF	
	0.6% DOWN 12250 X 150	
	0.3% UP	
	36L 18L 36R	
	TWR 727	
	680	
	9000 X 150	
	18L 36R	
	TDZ/CL Rwy 18L and 36R	
	HIRL Rwy 18L-36R and 18R-36L	
	FAF to MAP 3.1 NM	
	Knots	60 90 120 150 180
	Min:Sec	3:06 2:04 1:33 1:14 1:02

CATEGORY	A	B	C	D	E
S-ILS 18R		742/40	200 (200-¾)		
S-LOC 18R		860/40	318 (400-¾)		

SC-3, 10 JUL 2025 to 07 AUG 2025

SC-3, 10 JUL 2025 to 07 AUG 2025