

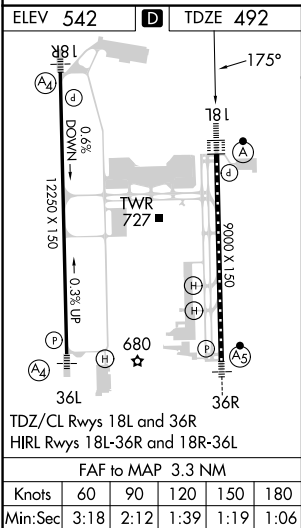
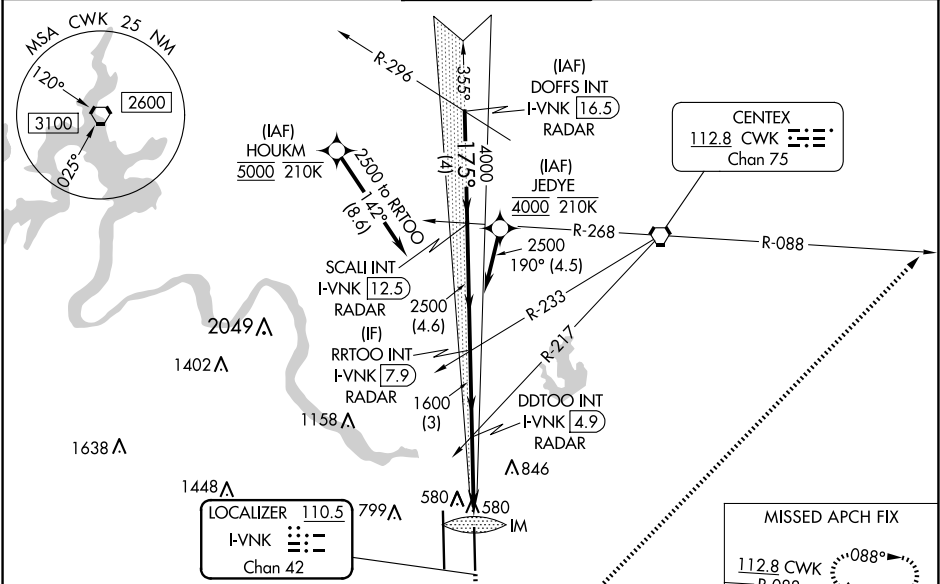
LOC/DME I-VNK	APP CRS	Rwy Idg	9000
110.5	175°	TDZE	492
Chan 42		Apt Elev	542

ILS or LOC RWY 18L

AUSTIN-BERGSTROM INTL (AUS)

RNP APCH-GPS. From HOUKM or JEDYE.	ALSF-2	MISSED APPROACH: Climb to 1000 then climbing left turn to 3000 on heading 040° and CWK VORTAC R-088 to HOOKK/CWK 17 DME and hold.
RADAR required for procedure entry from DOFFS. DME required.		
Simultaneous approach authorized. For inop ALS, increase S-ILS-18L Cat E visibility to RVR 4000, and S-LOC-18L Cats C, D, and E visibility to RVR 5500.		

D-ATIS	AUSTIN APP CON	AUSTIN TOWER	GND CON	CLNC DEL	CPDLC
124.4	127.225 317.65 (EAST) 120.875 270.25 (SOUTH) 119.0 370.85 (WEST)	121.0 281.5	121.9 348.6	125.5 263.0	



819△		842△		R-088 Chan 75 HOOKK CWK 17		268°	
VGSI and ILS glidepath not coincident (VGSI Angle 3.00/TCH 74).				1000 3000 hdg 040°		HOOKK CWK R-088 △	
DOFFS INT I-VNK 16.5 RADAR		SCALI INT I-VNK 12.5 RADAR		RRTOO INT I-VNK 7.9 RADAR		DDTOO INT I-VNK 4.9 RADAR	
5000		4000		2500		1600	
GS 3.00° TCH 61		175°		1600		I-VNK 2.5 I-VNK 1.6 IM	
4 NM		4.6 NM		3 NM		2.4 NM 0.8 0.1	
CATEGORY	A		B		C		D E
S-ILS 18L	692/18 200 (200-½)						
S-LOC 18L	840/24 348 (300-½)		840/30 348 (300-¾)				
CIRCLING	1040-1 498 (500-1)		1120-1 578 (600-1)		1200-1¾ 658 (700-1¾)		1200-2 658 (700-2) NA