

AUSTIN SEVEN DEPARTURE

AUSTIN, TEXAS

AL-556 (FAA)

RADAR required.

**TOP ALTITUDE:
ASSIGNED BY ATC**

AUSTIN DEP CON

119.0 370.85

D-ATIS

124.4

CLNC DEL

125.5 263.0

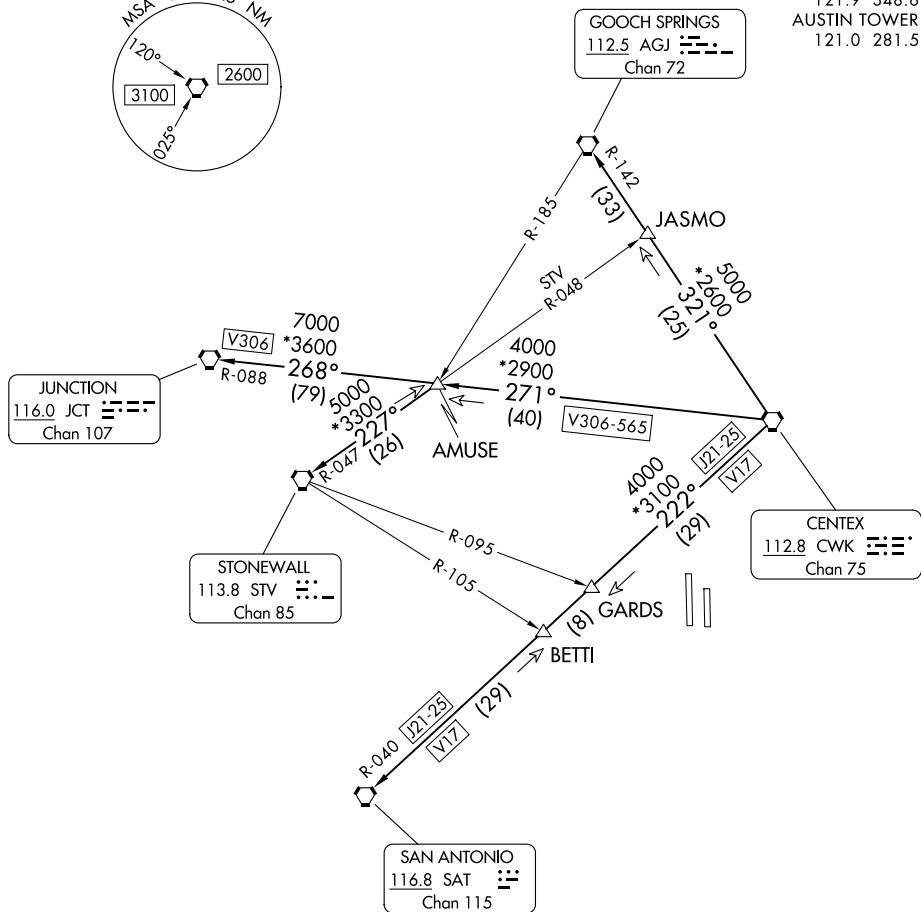
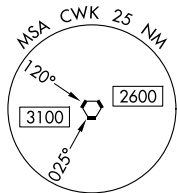
CPDLC

GND CON

121 9 348 6

AUSTIN TOWER

121.0 281.5



TAKEOFF MINIMUMS

Rwys 18L/R: Standard.

Rwys 36L/R: Standard with minimum climb of 240' per NM to 2600.

(CONTINUED ON FOLLOWING PAGE)

NOTE: Chart not to scale.

AUSTIN SEVEN DEPARTURE

(AUS7.CWK) 05SEP24

AUSTIN, TEXAS

AUSTIN-BERGSTROM INTL (AUS)

SC-3, 10 JUL 2025 to 07 AUG 2025