

ABERDEEN, MARYLAND

WAAS CH 70342 W22A	APCH CRS 218°	Rwy Idg 7998 TDZE 45 Arpt Elev 45
--------------------------	------------------	--

- (USA)

PHILLIPS AAF (ABERDEEN PROVING GROUND) (KAPG)


RNP APCH-GPS

T ** Circling NA SE of RWY 4-22.

MISSED APPROACH: Climb to 500, then climbing right turn to 2000 direct SUDYO and hold.

POTOMAC APP CON/DEP CON
125.525 291.625

ADVSY★

126.15 (CTAF) 

For uncompensated
Baro-VNAV systems,
LNAV/VNAV NA below -13°C
(9°F) or above 54°C (130°F).

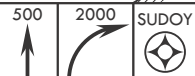
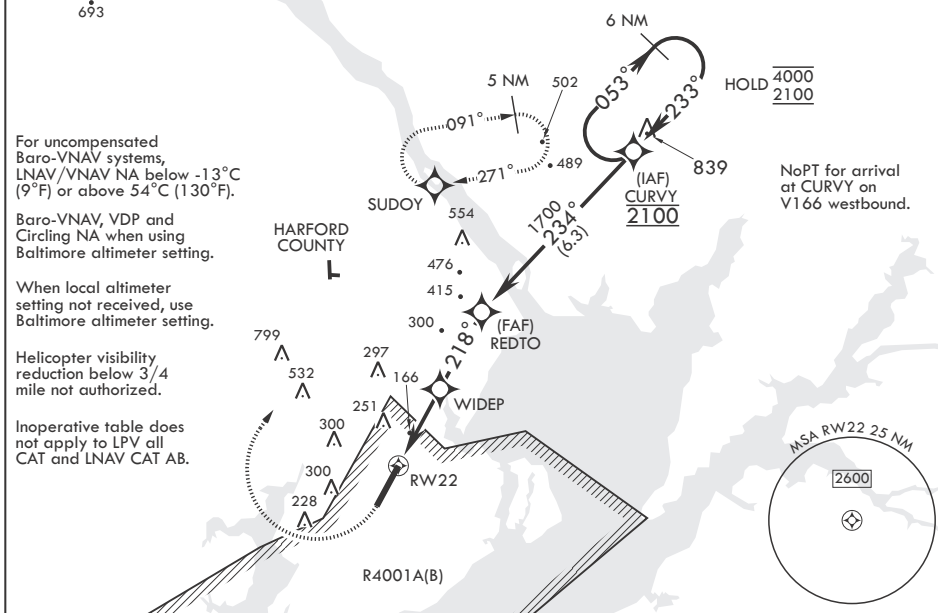
Baro-VNAV, VDP and Circling NA when using Baltimore altimeter setting.

When local altimeter setting not received, use Baltimore altimeter setting.

Helicopter visibility
reduction below 3/4
mile not authorized.

Inoperative table does not apply to LPV all CAT and LNAV CAT AB.

NoPT for arrival
at CURVY on
V166 westbound.



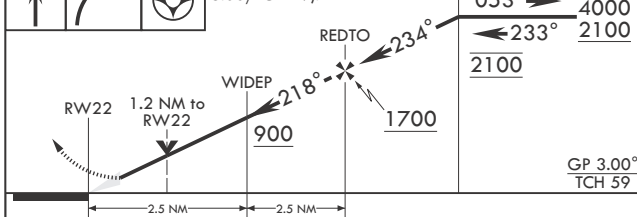
VGSI and RNAV glidepath not coincident (VGSI Angle 3.00/TCH 49).

6 NM
CURVY Holding Pattern

053° → 4000
← 233° 2100
2100

ELEV 45

TDZE 45



CATEGORY	A	B	C	D
LPV DA	295-1	250	(300-1)	
LNAV/VNAV DA	560-1½		515	(600-1½)
LNAV MDA	560-1	515 (600-1)	560-1½	515 (600-1½)
C CIRCLING**	560-1 515 (600-1)	640-1 595 (600-1)	680-1¾ 635 (700-1¾)	880-2¾ 835 (900-2¾)
BALTIMORE WASHINGTON INTL ALTIMETER SETTING MINIMUMS				
LPV DA	376-1¼		281 (300-1¼)	
LNAV/VNAV DA	657-1¾		612 (600-1¾)	
LNAV MDA	660-1¼	515 (700-1¼)	660-1¼	515 (700-1¼)
C CIRCLING**	660-1 615 (700-1¼)	740-1¼ 695 (700-1¼)	780-2 735 (800-2)	961-3 916 (1000-3)

HIRL all Rwy's **L**
REIL Rwy 22 **L**

ABERDEEN, MARYLAND

39°28'N - 76°10'W PHILLIPS AAF (ABERDEEN PROVING GROUND) (KAPG)

Amdt 3 15JUN23

RNAV (GPS) RWY 22

NE-3, 10 JUL 2025 to 07 AUG 2025