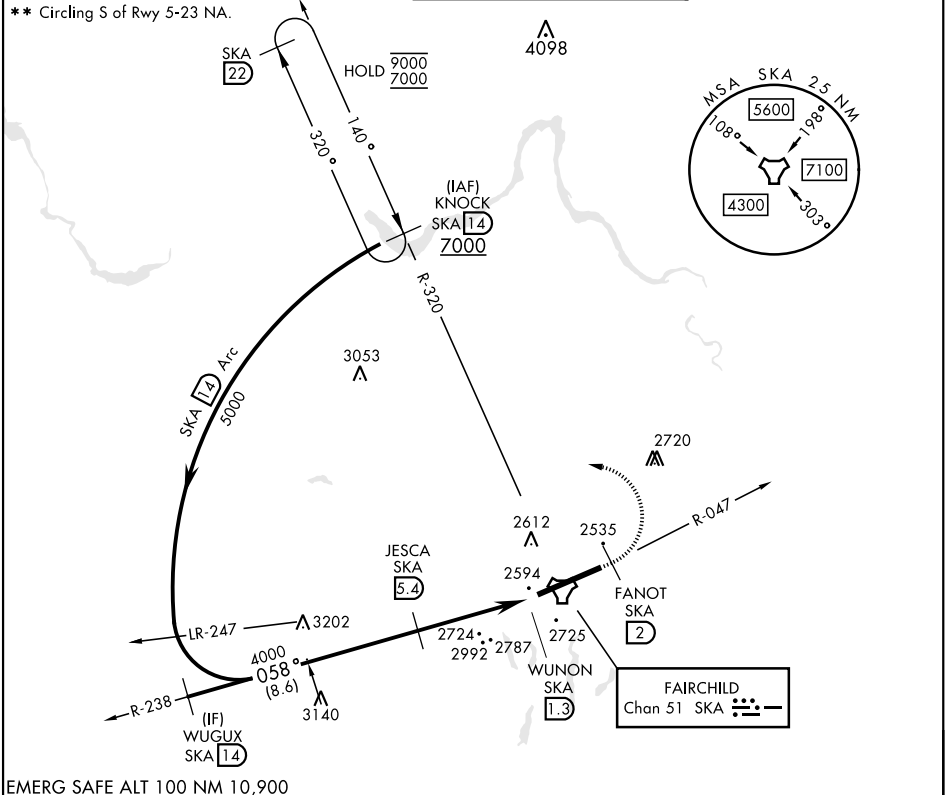


SPOKANE, WASHINGTON

TACAN RWY 5

| | | | | |
|---|--|---|------------------------------|---|
| TACAN Chan 51 | APCH CRS 058° | Rwy Idg 13,899 TDZE 2462 Arprt Elev 2462 | [USAF] | FAIRCHILD AFB (KSKA) |
| RADAR required for KNOCK holding. | | | ALSF-2 | MISSED APPROACH: Climb to 7000 via SKA TACAN R-047. At FANOT turn left hdg 275° to intcp SKA R-320 to KNOCK and hold, cont climb in hold to 7000. |
| * When ALS inop, increase CAT A RVR to 55, vis to 1 mile, CAT B vis to 1¼ miles, CAT CDE vis to 2½ miles. | | | | |
| ATIS 257.625 | SPOKANE APP CON 123.75 282.25 133.35 263.0 (208° - 028°) (029° - 207°) | | TOWER 120.35 233.7 | GND CON 123.6 275.8 |



EMERG SAFE ALT 100 NM 10,900

| | | | | | | |
|-------------|------------------------|-------------------------|-------------------------|------------------------|-----------|--------------------------------|
| | | 7000 SKA R-047 | FANOT SKA 2 | hdg 275° | ELEV 2462 | TDZE 2462 |
| | | 4000 | 3000 | 2000 | | |
| CATEGORY | A | B | C | D | E | |
| S-5 * | 3260/24 798 (800-½) | 3260/40 798 (800-¾) | 3260-1¼ 798 (800-1¼) | 798 | (800-1¼) | |
| CIRCLING ** | 3260-1 798 (800-1) | 3260-1¼ 798 (800-1¼) | 3260-2½ 798 (800-2½) | 3600-3 1138(1200-3) | | HIRL Rwy 5-23 TDZL/CL Rwy 5 |

SPOKANE, WASHINGTON

47°37'N-117°39'W

FAIRCHILD AFB (KSKA)

Amtd 5 03NOV22

TACAN RWY 5

NW-1, 10 JUL 2025 to 07 AUG 2025

NW-1, 10 JUL 2025 to 07 AUG 2025