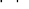
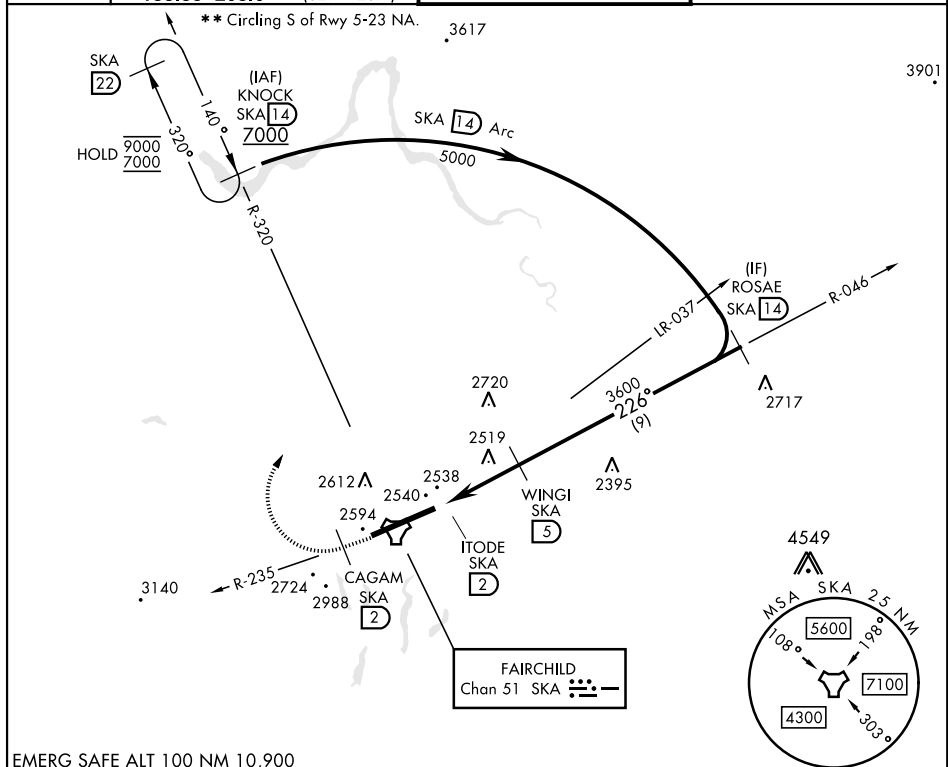


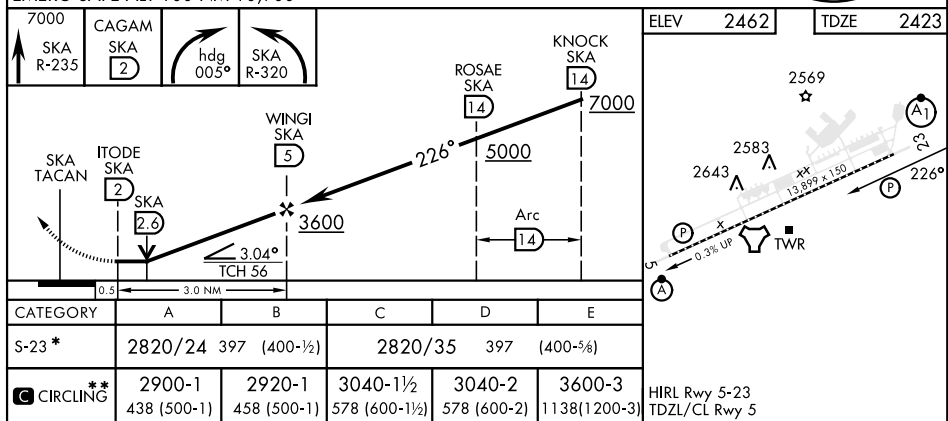
SPOKANE, WASHINGTON

TACAN RWY 23

TACAN SKA Chan <b>51</b>	APCH CRS <b>226°</b>	Rwy ldg <b>13,899</b> TDZE <b>2423</b> Arpt Elev <b>2462</b>	[USAF]	FAIRCHILD AFB (KSKA)	
RADAR required for KNOCK holding.			ALSF-1 	MISSED APPROACH: Climb to 7000 vis SKA TACAN R-235. At CAGAM, turn right hdg 005° to intercept SKA R-320 to KNOCK and hold, cont climb in hold to 7000.	
▼ * When ALS inop, increase CAT AB RVR to 55 and vis to 1 mile, CAT CDE RVR to 60, vis to 1 1/2 miles.					
ATIS <b>257.625</b>	SPOKANE APP CON <b>123.75 282.25</b> (208° - 028°) <b>133.35 263.0</b> (029° - 207°)		TOWER <b>120.35 233.7</b>	GND CON <b>123.6 275.8</b>	



EMERG SAFE ALT 100 NM 10,900



SPOKANE, WASHINGTON

47°37'N-117°39'W

FAIRCHILD AFB (KSKA)

Amdt 4 03NOV22

TACAN RWY 23

NW-1, 10 JUL 2025 to 07 AUG 2025