

SPOKANE, WASHINGTON

RNAV (GPS) RWY 5

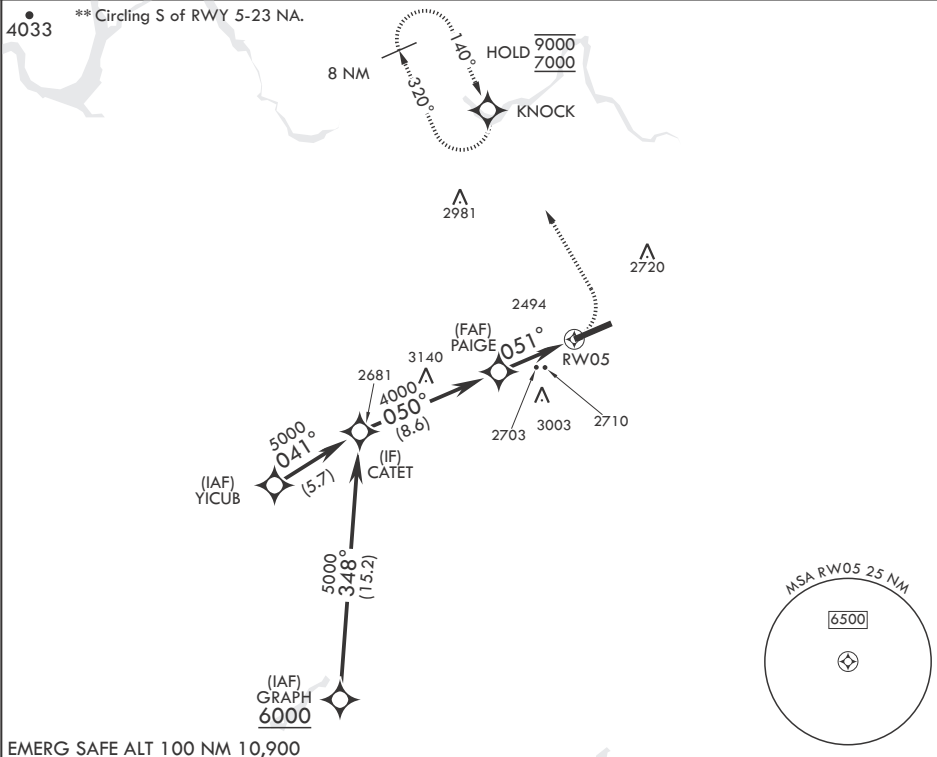
APCH CRS	Rwy Idg	13,899
051°	TDZE	2462
	Arprt Elev	2462

- (USAF)

FAIRCHILD AFB (KSKA)

RNP APCH	ALSIF-2	MISSED APPROACH: Climbing left turn to 7000 direct KNOCK and hold, continue climb in hold to 7000.
RADAR required for KNOCK holding.		
* When ALS inop, increase CAT A RVR to 55, vis to 1 mile, CAT B RVR to 60, vis to 1 1/4 miles, and CAT CDE vis to 2 1/2 miles.		

ATIS 257.625	SPOKANE APP CON 123.75 282.25 (208°-028°) 133.35 263.0 (029°-207°)	TOWER 120.35 233.7	GND CON 123.6 275.8
-----------------	--	-----------------------	------------------------



CATET		7000 KNOCK		ELEV 2462	TDZE 2462
5000		PAIGE		RWY05	
050°		4000		1.8 NM to RWY05	
		3.00° TCH 58		4.6 NM	
CATEGORY	A	B	C	D	E
LNAV MDA*	3100/24	638 (700-½)	3100-1⅓	638 (700-1⅓)	
CIRCLING**	3100-1	638 (700-1)	3100-1¾	3100-2	3600-3
			638 (700-1¾)	638 (700-2)	1138 (1200-3)

HIRL all Rwy
TDZL/CL Rwy 5

SPOKANE, WASHINGTON

47°37'N - 117°39'W

FAIRCHILD AFB (KSKA)

Amddt 2 03NOV22

RNAV (GPS) RWY 5

NW-1, 10 JUL 2025 to 07 AUG 2025

NW-1, 10 JUL 2025 to 07 AUG 2025