

SPOKANE, WASHINGTON

# RNAV (GPS) RWY 23

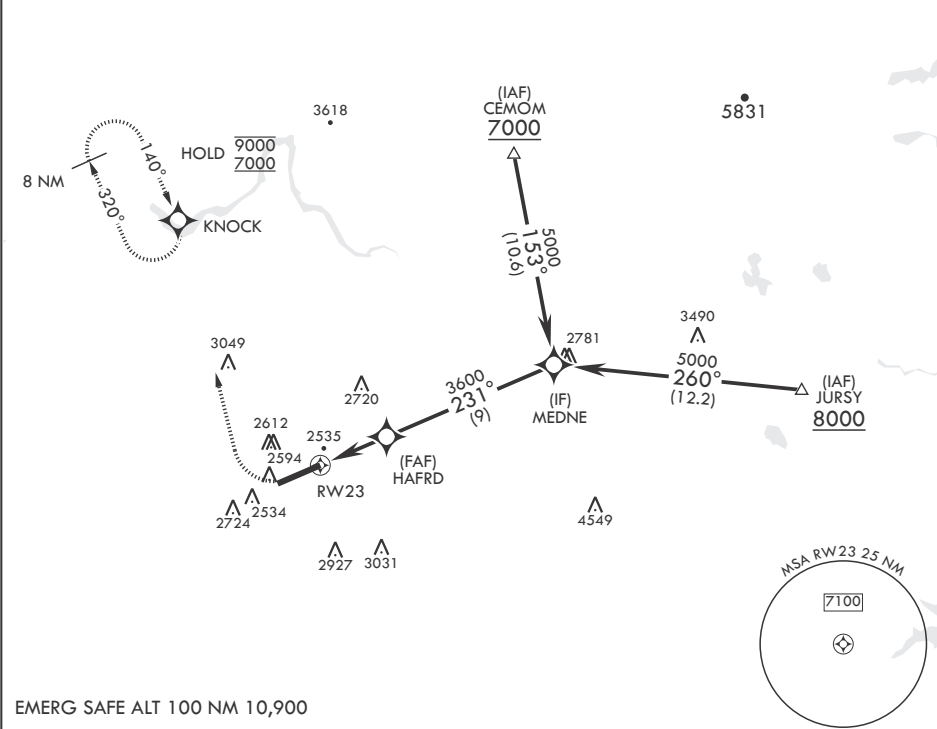
APCH CRS	Rwy Idg	13,899
231°	TDZE	2423
	Arprt Elev	2462

- (USAF)

FAIRCHILD AFB (KSKA)

RNP APCH	ALSIF-1	MISSED APPROACH: Climb to 3000, then climbing right turn to 7000 direct to KNOCK and hold, continue climb in hold to 7000.
RADAR required for KNOCK holding.		
* When ALS inop, increase CAT AB RVR to 55 and vis to 1 mile, CAT CDE vis to 1 1/4 miles.		
ATIS 257.625	SPOKANE APP CON 123.75 282.25 (208°-028°) 133.35 263.0 (029°-207°)	TOWER 120.35 233.7
		GND CON 123.6 275.8

\*\* Circling S of Rwy 5-23 NA.



EMERG SAFE ALT 100 NM 10,900

3000	7000	KNOCK	MEDNE					ELEV 2462	TDZE 2423
1.1 NM to RWY 23			3600					5000	
3.5 NM			3600					5000	
≤ 3.00°			TCH 56						
CATEGORY	A	B	C	D	E				
LNAV MDA*	2820/24	397 (400-½)	2820/35	397	(400-¾)				
CIRCLING**	2900-1 438 (500-1)	2920-1 458 (500-1)	3040-1½ 578 (600-1½)	3040-2 578 (600-2)	3600-3 1138 (1200-3)				
SPOKANE, WASHINGTON						FAIRCHILD AFB (KSKA)			
47°37'N - 117°39'W						RNAV (GPS) RWY 23			
Amdt 2 03NOV22									