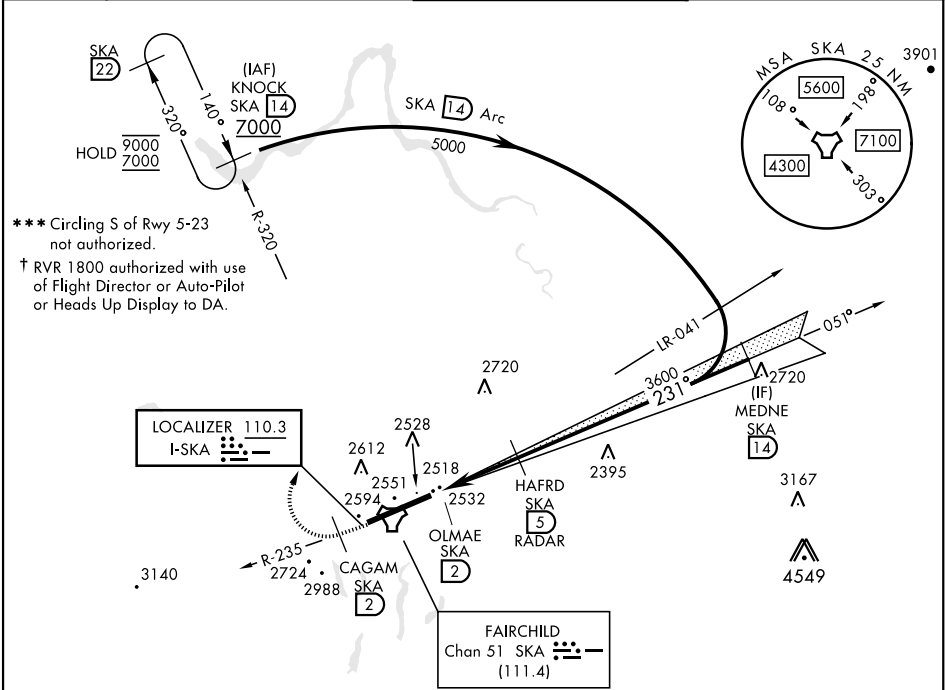


SPOKANE, WASHINGTON

ILS or LOC RWY 23

LOC I-SKA <b>110.3</b>	APCH CRS <b>231°</b>	Rwy Idg <b>13,899</b> TDZE <b>2423</b> Arpt Elev <b>2462</b>	[USAF]	FAIRCHILD AFB (KSKA)
DME or RADAR rqr'd for LOC. RADAR rqr'd for KNOCK holding.			ALSIF-1	MISSED APPROACH: Climb to 7000 via SKA R-235. At CAGAM, turn right heading 005° to intcp SKA R-320 to KNOCK and hold, cont climb in hold to 7000.
▼* When ALS inop, increase RVR to 40 and vis to ¾ mile. ** When ALS inop, increase RVR to 55 and vis to 1 mile.			A1	
ATIS <b>257.625</b>	SPOKANE APP CON <b>123.75 282.25</b> <b>133.35 263.0</b>	(208° - 028°) (029° - 207°)	TOWER <b>120.35 233.7</b>	GND CON <b>123.6 275.8</b>



EMERG SAFE ALT 100 NM 10,900

7000 ↑ SKA R-235	CAGAM SKA 2	hdg 005°	SKA R-320	ELEV 2462	TDZE 2423
CATEGORY	A	B	C	D	E
S-ILS 23**†	2623/24		200	(200-½)	
S-LOC 23**	2800/24	377 (400-½)	2800/35	377	(400-¾)
*** CIRCLING	2900-1	2920-1	3040-1½	3040-2	3600-3
	438 (500-1)	458 (500-1)	578 (600-1½)	578 (600-2)	1138 (1200-3)
HIRL Rwy 5-23 TDZL/CL Rwy 5					
FAF to MAP 3.0 NM					
Knots	60	90	120	150	180
Min:Sec	3:00	2:00	1:30	1:12	1:00

SPOKANE, WASHINGTON

47°37'N-117°39'W

FAIRCHILD AFB (KSKA)

Amtd 4 03NOV22

ILS or LOC RWY 23

NW-1, 10 JUL 2025 to 07 AUG 2025

NW-1, 10 JUL 2025 to 07 AUG 2025