

SPOKANE, WASHINGTON

ILS RWY 5 (CAT II)

LOC I-FRC <u>110.3</u>	APCH CRS 051°	Rwy Idg 13,899 TDZE 2462 Arpt Elev 2462
----------------------------------	-------------------------	--

[USAF]

FAIRCHILD AFB (KSKA)

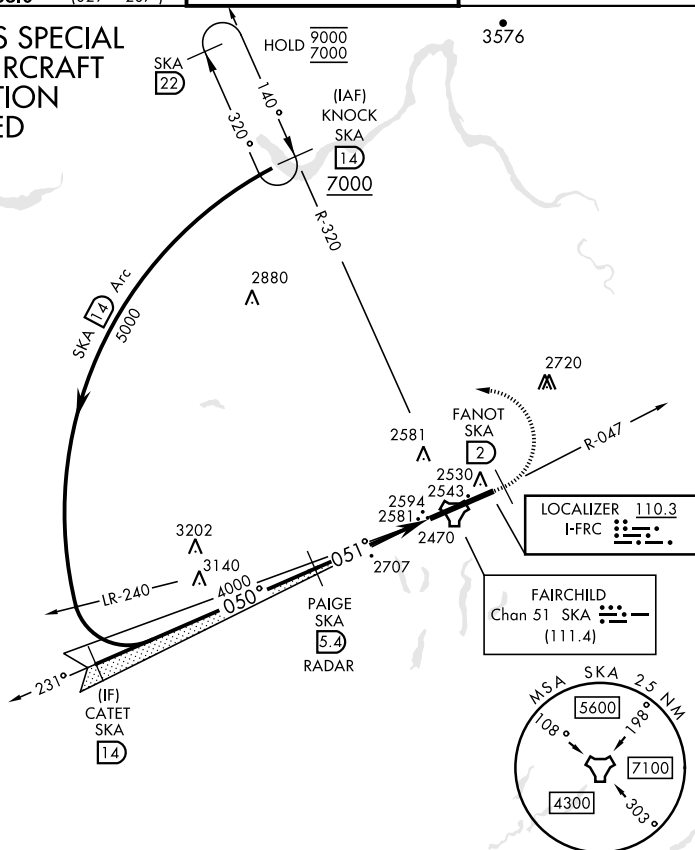
RADAR required for KNOCK holding.

ALSF-2

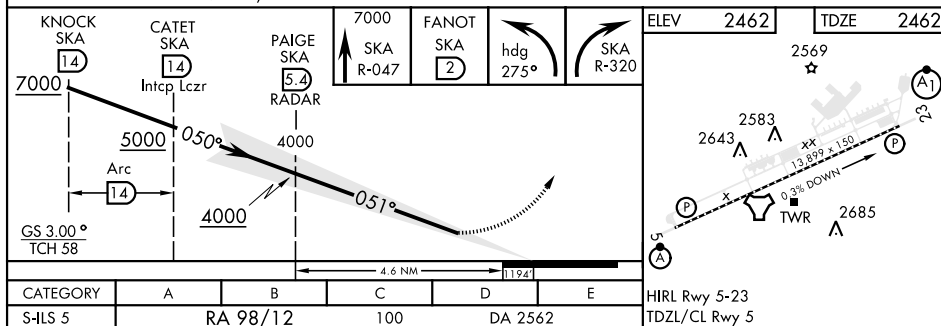
MISSED APPROACH: Climb to 7000 via SKA TACAN R-047. At FANOT turn left hdg 275° to intcp SKA R-320 to KNOCK and hold, continue climb in hold to 7000.

ATIS	SPOKANE APP CON		TOWER		GND CON	
257.625	123.75	282.25 (208° - 028°)	120.35	233.7	123.6	275.8
	133.35	263.0 (029° - 207°)				

CATEGORY II ILS SPECIAL
AIRCREW & AIRCRAFT
CERTIFICATION
REQUIRED



EMERG SAFE ALT 100 NM 10,900



SPOKANE, WASHINGTON

47°37'N-117°39'W

FAIRCHILD AFB (KSKA)

Amdt 2 03NOV22

ILS RWY 5 (CAT II)

NW-1, 10 JUL 2025 to 07 AUG 2025

NW-1, 10 JUL 2025 to 07 AUG 2025