

## WLKKR FIVE DEPARTURE (RNAV)

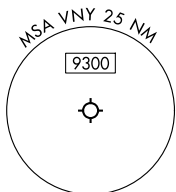
VAN NUYS (VNY)  
VAN NUYS, CALIFORNIA

△ COREZ

RADAR required.

**TOP ALTITUDE:**  
**FL230**

Rwy 16R: Standard with minimum climb of 500'/NM to 1302 then minimum climb of 420'/NM to 2600.



NOTE: Chart not to scale.

## DEPARTURE ROUTE DESCRIPTION

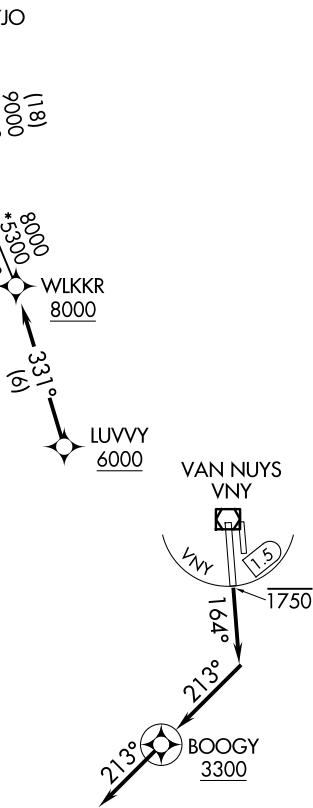
**TAKEOFF RUNWAY 16R:** Climb on heading 164° to intercept course 213° to cross BOOGY at or above 3300, then on track 213° or as assigned by ATC for vectors to cross LUVVY at or above 6000, then on track 331° to cross WLKKR at or above 8000 then on transition. Maintain FL230. Expect filed altitude 10 minutes after departure.

ALL AIRCRAFT: ATC climb gradient: if unable to accept climb rate advise ATC prior to taxi. Rwy 16R: ATC climb rate of 600'/NM to 3000.

COREZ TRANSITION (WLKKR5.COREZ)

CSTRO TRANSITION (WLKKR5.CSTRO)

## OROSZ TRANSITION (WLKKR5.ORSZ)



## WLKKR FIVE DEPARTURE (RNAV)

(WLKCR5.WLKCR) 20FEB25

VAN NUYS, CALIFORNIA  
VAN NUYS (VNY)

SW-3, 10 JUL 2025 to 07 AUG 2025