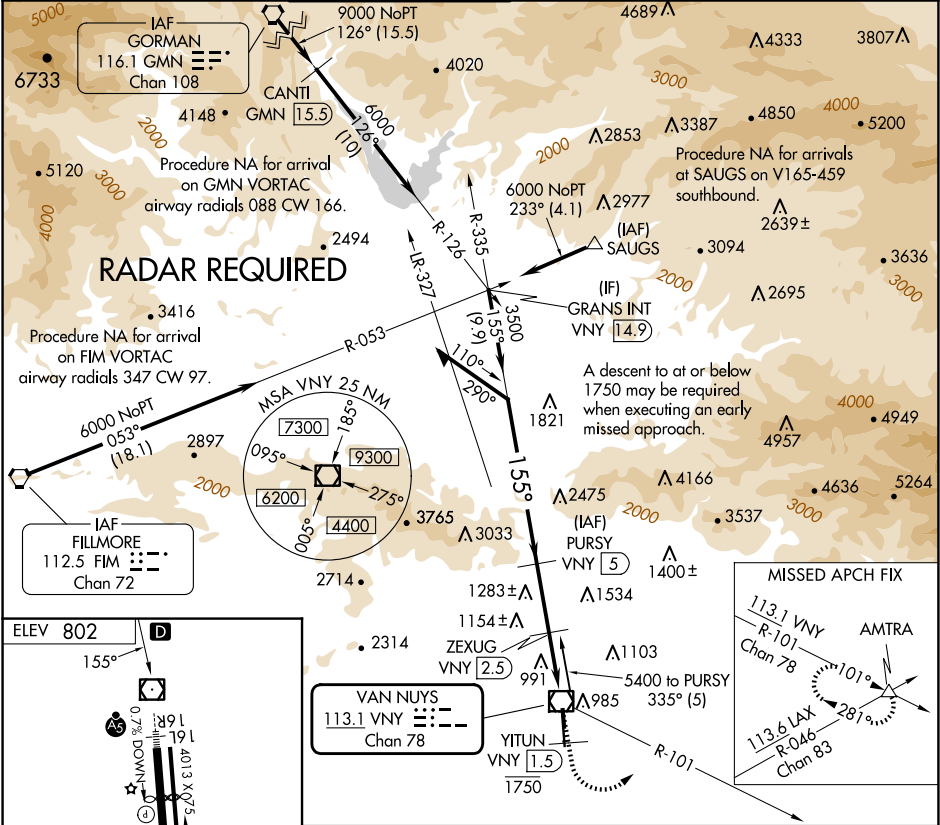


VOR/DME VNY <b>113.1</b> Chan <b>78</b>	APP CRS <b>155°</b>	Rwy Ldg TDZE Apt Elev <b>N/A</b> <b>N/A</b> <b>802</b>	<b>VOR-B</b> VAN NUYS (VNY)
---	------------------------	---	--------------------------------

**V** DME required and RADAR required for monitoring of missed approach.  
**A** Circling Rwy 16L NA at night. Circling NA for Cat D west of Rwy 16R-34L.  
When local altimeter setting not received, use Burbank altimeter setting and increase all MDAs 20 feet.

MISSED APPROACH: Climb on VNY VOR/DME R-155 to cross YITUN/VNY 1.5 DME at or below 1750 then climbing left turn to 4000 on VNY VOR/DME R-101 to AMTRA INT and hold.

ATIS <b>127.55</b>	SOCAL APP CON <b>120.4 360.6</b> (NORTH) <b>134.2 338.2</b> (WEST)	VAN NUYS TOWER★ <b>119.3</b> (CTAF) <b>0 239.0</b>	GND CON <b>121.7</b>	CLNC DEL <b>126.6 239.0</b>	CPDLC	UNICOM <b>122.95</b>
-----------------------	--	---	-------------------------	--------------------------------	-------	-------------------------



Remain within 10 NM		PURSY VNY [5]	Cross VNY [1.5] 1750	4000 VNY R-101	AMTRA △
5400		335°	ZEXUG VNY [2.5]	VNY VOR/DME	
3500		155°	2580		
		2.5 NM		2.5 NM	
CATEGORY	A	B	C	D	
<b>C</b> CIRCLING	1660-1¼	858 (900-1¼)	1660-2½ 858 (900-2½)	1740-3 938 (1000-3)	