

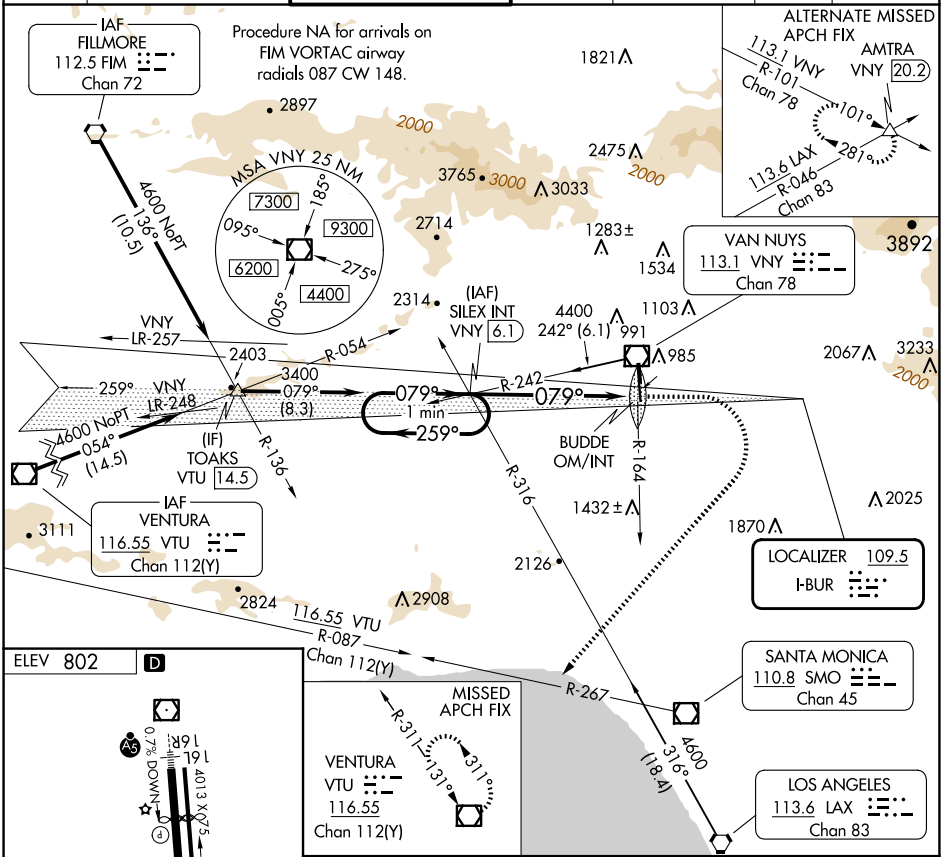
LOC I-BUR 109.5	APP CRS 079°	Rwy Ldg TDZE Apt Elev	N/A N/A 802
---------------------------	------------------------	-----------------------------	--

LDA-C
VAN NUYS (VNY)

⚠ Circling Rwy 16L NA at night.

MISSED APPROACH: Climb to 1900 then climbing right turn to 4600 on heading 210° and on SMO VOR/DME R-267 and on VTU VOR/DME R-087 to VTU VOR/DME and hold.

ATIS 127.55	SOCAL APP CON 120.4 360.6 (NORTH) 134.2 338.2 (WEST)	VAN NUYS TOWER ★ 119.3 (CTAF) 0 239.0	GND CON 121.7	CLNC DEL 126.6 239.0	CPDLC	UNICOM 122.95
-----------------------	--	---	-------------------------	--------------------------------	-------	-------------------------



ELEV 802

D

HIRL Rwy 16R-34L **34L**

MIRL Rwy 16L-34R

FAF to MAP 6 NM

Knots	60	90	120	150	180
Min:Sec	6:00	4:00	3:00	2:24	2:00

One Minute Holding Pattern

Disregard glide slope indications

6 NM

BUDDIE OM/INT

SILEX INT VNY 6.1

VENTURA VTU 116.55 Chan 112(Y)

MISSED APCH FIX

LOS ANGELES 113.6 LAX Chan 83

SANTA MONICA 110.8 SMO Chan 45

LOCALIZER 109.5 I-BUR

IAF VENTURA 116.55 VTU Chan 112(Y)

IAF SILEX INT VNY 6.1

IAF VAN NUYS 113.1 VNY Chan 78

ALTERNATE MISSED APCH FIX 113.1 VNY R-101 Chan 78, 113.6 LAX R-046 Chan 83

MSA VNY 25 NM

Procedure NA for arrivals on FIM VORTAC airway radials 087 CW 148

IAF FILLMORE 112.5 FIM Chan 72

ATIS 127.55

SOCAL APP CON 120.4 360.6 (NORTH), 134.2 338.2 (WEST)

VAN NUYS TOWER 119.3 (CTAF) 0 239.0

GND CON 121.7

CLNC DEL 126.6 239.0

CPDLC

UNICOM 122.95

LOC I-BUR 109.5

APP CRS 079°

Rwy Ldg TDZE Apt Elev

N/A N/A 802

AL-552 (FAA)

25163

LDA-C

VAN NUYS (VNY)

CATEGORY	A	B	C	D
CIRCLING	1500-1 698 (700-1)		1500-2 698 (700-2)	2060-3 1258 (1300-3)