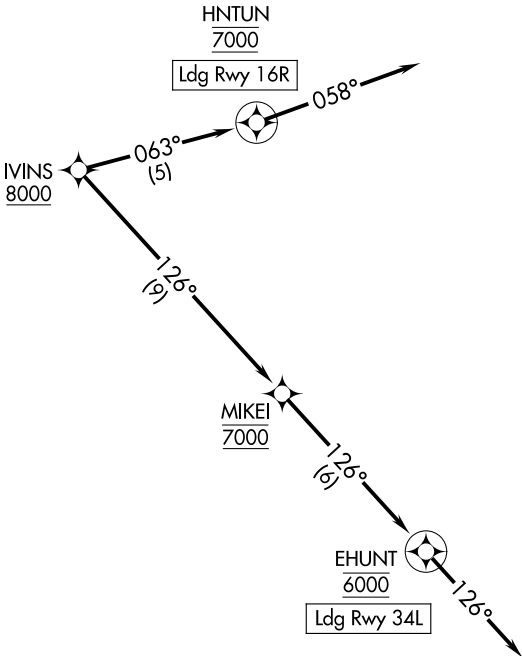


SOCAL APP CON
128.75 381.55
ATIS
127.55
VAN NUYS TOWER★
119.3 239.0

RNAV 1 - DME/DME/IRU or GPS.

RADAR required.



NOTE: Expect Rwy 16R unless otherwise assigned by ATC.

NOTE: Chart not to scale.

ARRIVAL ROUTE DESCRIPTION

- LANDING RUNWAY 16R:

From IVINS on track 063° to cross HNTUN at 7000, then on track 058°. Expect RADAR vectors to final approach course.
- LANDING RUNWAY 34L:

From IVINS on track 126° to cross MIKEI at 7000, then on track 126° to cross EHUNT at 6000, then on track 126°. Expect RADAR vectors to final approach course.