

APP CRS
358°

Rwy Idg
TDZE
916

Apt Elev
916

RNAV (GPS) RWY 36

GOULD PETERSON MUNI (K57)

RNP APCH - GPS.

▼

NA

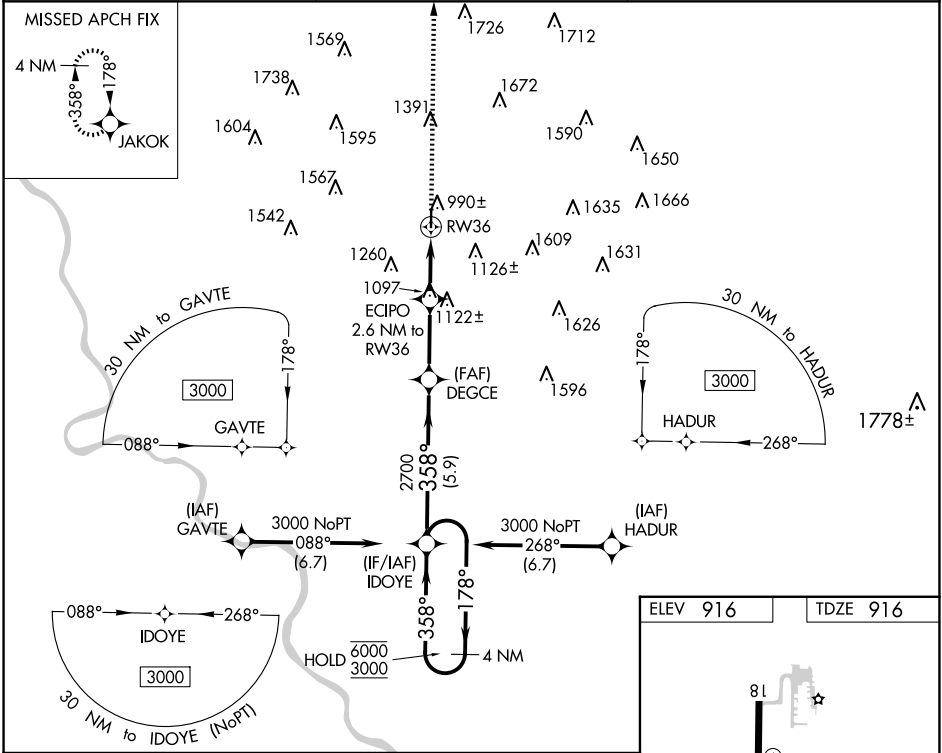
Rwy 36 helicopter visibility reduction below ¾ SM NA.
Circling Rwy 18 NA at night.
Use Shenandoah altimeter setting; when not received,
use Clarinda altimeter setting and increase all MDAs 20 feet.

MISSED APPROACH: Climb to 4000 direct JAKOK and hold,
Continue climb-in-hold to 4000

SDA AWOS-3
125.525

MINNEAPOLIS CENTER
119.6 290.4

CTAF
122.9 0



4 NM Holding Pattern

IDOYE

6000

3000

178°

358°

DEGCE

4000

JAKOK

ECIPO

2.6 NM to RW36

3.00°

TCH 40

2700

1780

RW36

5.9 NM

2.9 NM

2.6 NM

CATEGORY	A	B	C	D
LNNAV MDA	1460-1	544 (600-1)	1460-1½ 544 (600-1½)	NA
CIRCLING	1520-1 604 (700-1)	1540-1 624 (700-1)	1680-2¼ 764 (800-2¼)	NA

ELEV 916

TDZE 916

81

3600 X 75

36

358°

MIRL Rwy 18-36 0

REIL Rws 18 and 36 0