

APP CRS  
**178°**

Rwy Idg  
TDZE **916**  
Apt Elev **916**

**RNAV (GPS) RWY 18**

GOULD PETERSON MUNI (K57)

RNP APCH - GPS.

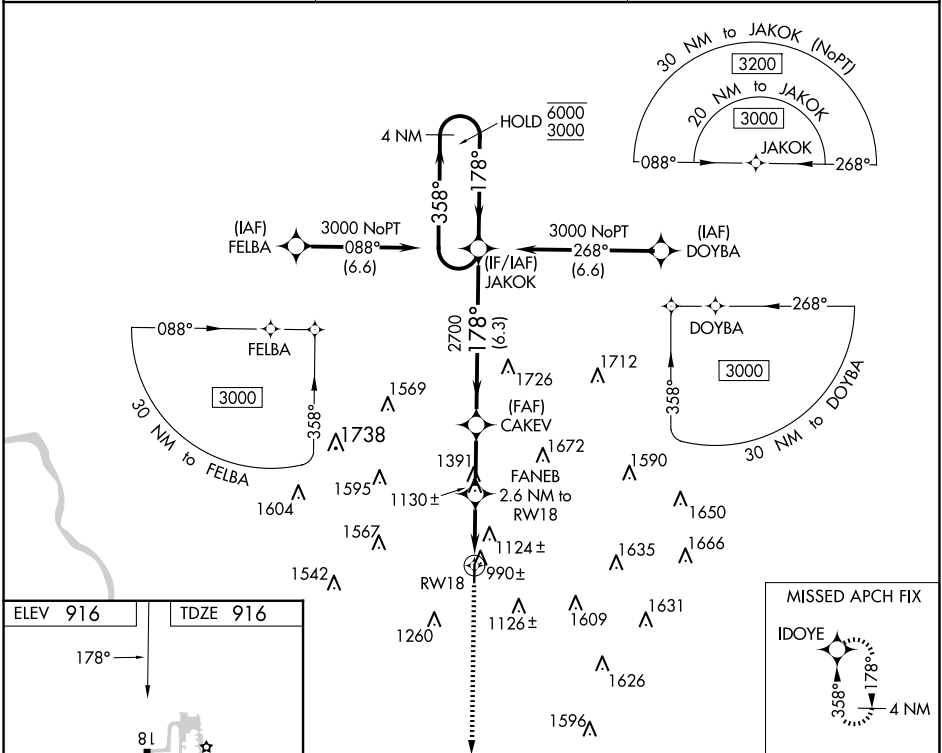
▼

NA

Rwy 18 helicopter visibility reduction below 1 SM NA.  
Use Shenandoah altimeter setting; when not received, use Clarinda altimeter setting and increase all MDAs 20 feet and visibility LNAV Cat C ½ SM.  
Straight-in Rwy 18 NA at night, Circling Rwy 18 NA at night.

MISSED APPROACH: Climb to 4000 direct IDOYE and hold, continue climb-in-hold to 4000.

SDA AWOS-3 <b>125.525</b>	MINNEAPOLIS CENTER <b>119.6 290.4</b>	CTAF <b>122.9 0</b>
------------------------------	--	------------------------



ELEV 916 TDZE 916

178°

81

3600 X 75

36

4000 IDOYE

JAKOK 4 NM Holding Pattern

FANEB 2.6 NM to RWY 18

CAKEV

3.25° TCH 40

1840

2700

358° 6000

178° 3000

2.6 NM 2.5 NM 6.3 NM

CATEGORY	A	B	C	D
LNAV MDA	1 440-1	524 (600-1)	1 440-1½ 524 (600-1½)	NA
CIRCLING	1 520-1 604 (700-1)	1 540-1 624 (700-1)	1 680-2¼ 764 (800-2¼)	NA