

ZIAS5 FIVE DEPARTURE

SANTA FE RGNL (SAF)
SANTA FE, NEW MEXICO

AL-548 (FAA)

RADAR required.

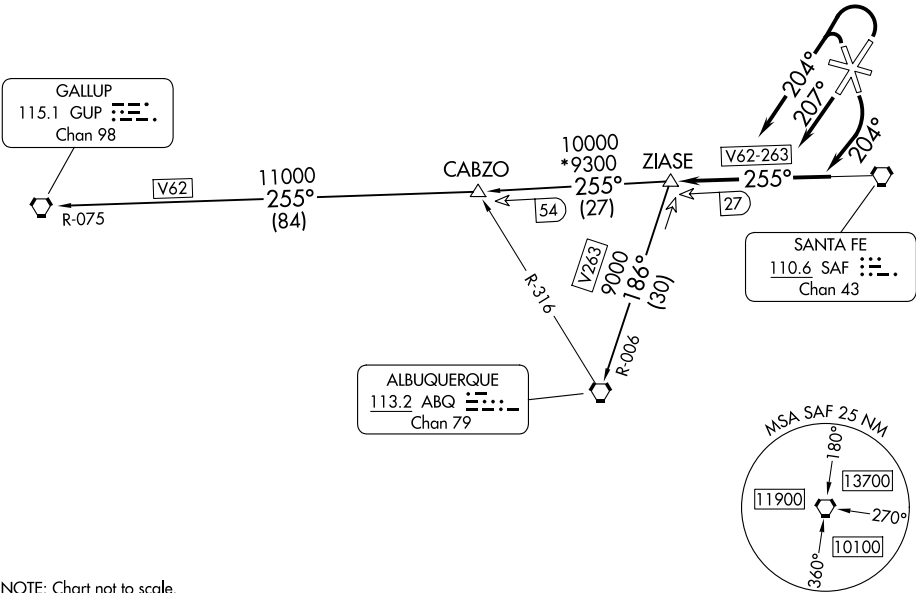
TOP ALTITUDE:
ASSIGNED BY ATC

ALBUQUERQUE CENTER
132.8 346.35
ATIS
128.55
GND CON
121.7
SANTA FE TOWER*
119.5 239.3

CAUTION: Mountainous terrain all quadrants.

TAKEOFF MINIMUMS

Rwys 10, 28: NA - ATC.
Rwys 15, 20: Standard.
Rwy 2: Standard with minimum climb of 235' per NM to 8200.
Rwy 33: Standard with minimum climb of 310' per NM to 8200.



DEPARTURE ROUTE DESCRIPTION

TAKEOFF RUNWAYS 2, 33: Climbing left turn to heading 204° thence. . . .
TAKEOFF RUNWAY 15: Climbing right turn to heading 204° thence. . . .
TAKEOFF RUNWAY 20: Climb on heading 207° thence. . . .
. . . . intercept and proceed on SAF R-255 to ZIAS5 INT, then on assigned transition.
Maintain ATC assigned altitude.

ALBUQUERQUE TRANSITION (ZIAS5.ABQ): From over ZIAS5 INT on ABQ R-006 to ABQ VORTAC.

GALLUP TRANSITION (ZIAS5.GUP): From over ZIAS5 INT on SAF R-255 and GUP R-075 to GUP VORTAC.