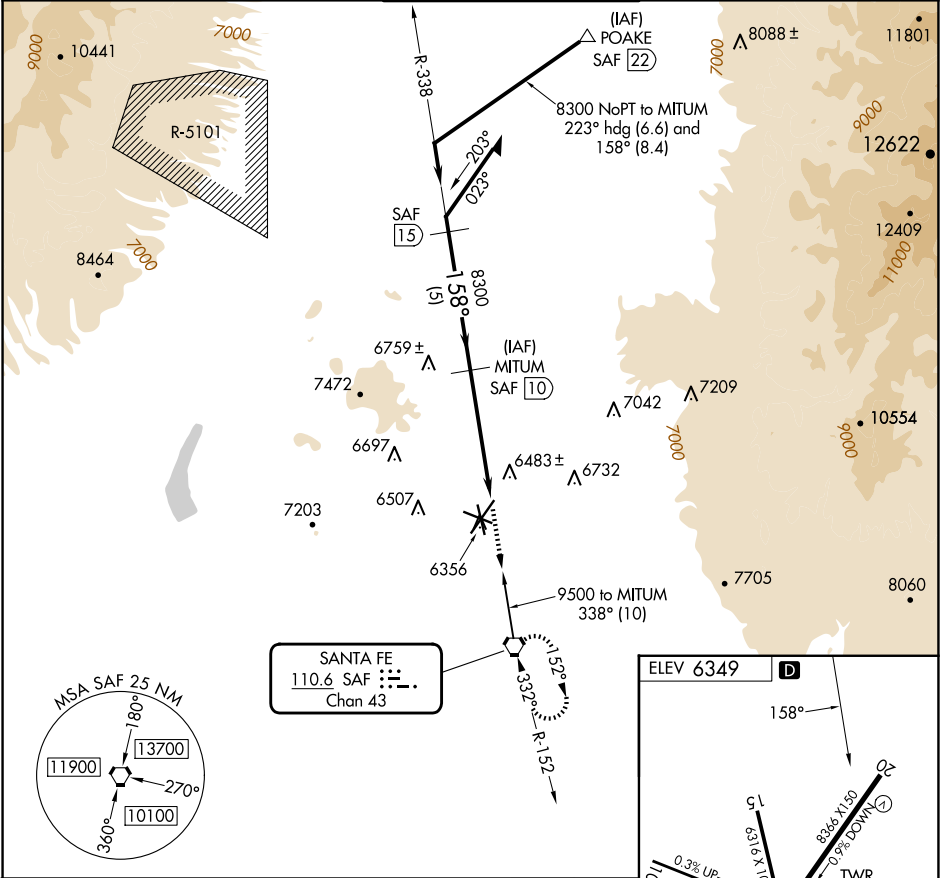


VORTAC SAF <b>110.6</b> Chan <b>43</b>	APP CRS <b>158°</b>	Rwy Ldg TDZE Apt Elev <b>6349</b>	<b>N/A</b> <b>N/A</b> <b>6349</b>
--	------------------------	---	---

VOR/DME-A  
SANTA FE RGNL (SAF)

<p><b>⚠</b> When control tower closed, obtain local altimeter setting on UNICOM; when not received, use Los Alamos altimeter setting: increase all MDA's 160 feet.</p>	<p>MISSED APPROACH: Climb to 9000 direct SAF VORTAC and hold, continue climb-in-hold to 9000.</p>
--	---

ATIS <b>128.55</b>	ALBUQUERQUE CENTER <b>132.8 346.35</b>	SANTA FE TOWER ★ <b>119.5 (CTAF) 239.3</b>	GND CON <b>121.7</b>	UNICOM <b>122.95</b>
-----------------------	---	---	-------------------------	-------------------------



Remain within 10 NM		MITUM SAF 10	9000	SAF
338°		158°	8300	SAF 5.3
4.7 NM				
CATEGORY	A	B	C	D
CIRCLING	6960-1	611 (700-1)	7340-3 991 (1000-3)	7660-3 1311 (1400-3)

REIL Rwy's 10, 15, 20 and 33  
MIRL Rwy's 2-20 and 15-33