
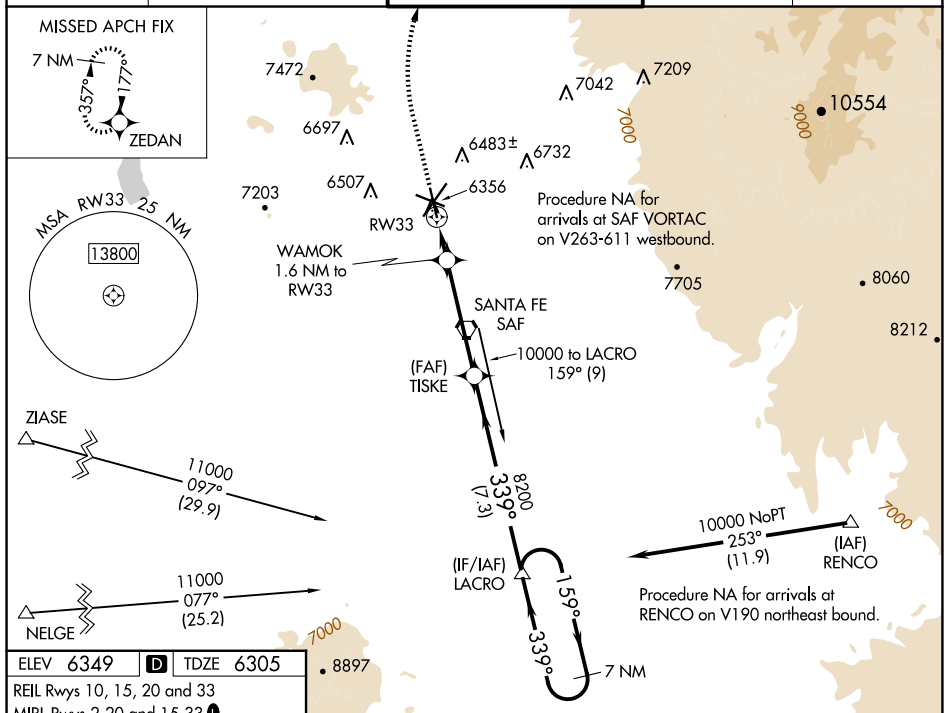


WAAS CH <b>69539</b> <b>W33A</b>	APP CRS <b>339°</b>	Rwy Ldg <b>6316</b> TDZE <b>6305</b> Apt Elev <b>6349</b>
--	------------------------	---

RNAV (GPS) RWY 33  
SANTA FE RGNL (SAF)

	For uncompensated Baro-VNAV systems, LNAV/VNAV NA below -18°C (0°F) or above 43°C (110°F). DME/DME RNP-0.3 NA.			MISSED APPROACH: Climb to 6800 then climbing right turn to 11000 direct ZEDAN and hold.	
	ATIS <b>128.55</b>	ALBUQUERQUE CENTER <b>132.8 346.35</b>	SANTA FE TOWER ★ <b>119.5 (CTAF) 0 239.3</b>	GND CON <b>121.7</b>	UNICOM <b>122.95</b>



**VOR/DME Station Data:**

Category	A	B	C	D
LPV DA	6555- $\frac{7}{8}$	250 (300- $\frac{7}{8}$ )		
LNAV/VNAV DA	6555- $\frac{7}{8}$	250 (300- $\frac{7}{8}$ )		
LNAV MDA	6620-1	315 (300-1)	6620- $\frac{7}{8}$	315 (300- $\frac{7}{8}$ )
<b>CIRCLING</b>	6800-1 451 (500-1)	6920-1 571 (600-1)	7340-3 991 (1000-3)	7660-3 1311 (1400-3)

**RNAV Glidepath Details:**

- Start Altitude: 6840\*
- End Altitude: 8200
- Distance: 4.3 NM
- Glidepath Angle: 339°
- Holding Pattern: 7 NM