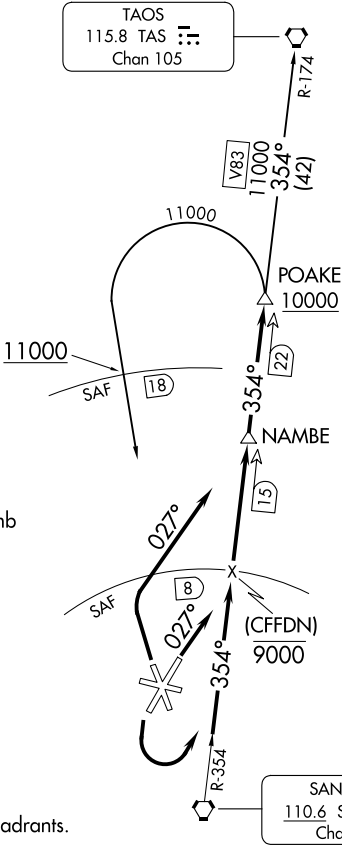


ALBUQUERQUE CENTER  
132.8 346.35  
ATIS  
128.55  
GND CON  
121.7  
SANTA FE TOWER★  
119.5 (CTAF) 239.3

TOP ALTITUDE:  
ASSIGNED by ATC



TAKEOFF MINIMUMS  
Rwy 2: Standard with minimum climb  
of 220' per NM to 7300.  
Rwy 20, 30: Standard.

CAUTION: Mountainous terrain all quadrants.  
NOTE: DME required.  
NOTE: Chart not to scale.

DEPARTURE ROUTE DESCRIPTION

TAKEOFF RUNWAY 2: Climb heading 027° thence. . . .  
TAKEOFF RUNWAY 20: Climbing left turn thence. . . .  
TAKEOFF RUNWAY 33: Climbing right turn to heading 027° thence. . . .  
. . . .Intercept and proceed on SAF R-354 to POAKE DME fix. Cross 8 DME ARC  
north of SAF VORTAC at or below 9000. Cross POAKE DME fix at or  
above 10000. Then on (transition) or (assigned route).  
  
SANTA FE TRANSITION (POAKE2.SAF): From POAKE DME fix left turn direct  
SAF VORTAC. Cross 18 DME north of SAF VORTAC at/above 11000'.  
  
TAOS TRANSITION (POAKE2.TAS): From POAKE DME fix via SAF R-354 and  
TAS R-174 to TAS VORTAC.