

WAAS CH 66041 W06A	APP CRS 057°	Rwy Idg 10000 TDZE 1103 Apt Elev 1159
--	------------------------	--

RNAV (GPS) Z RWY 6

SAN BERNARDINO INTL (SBD)

RNP APCH

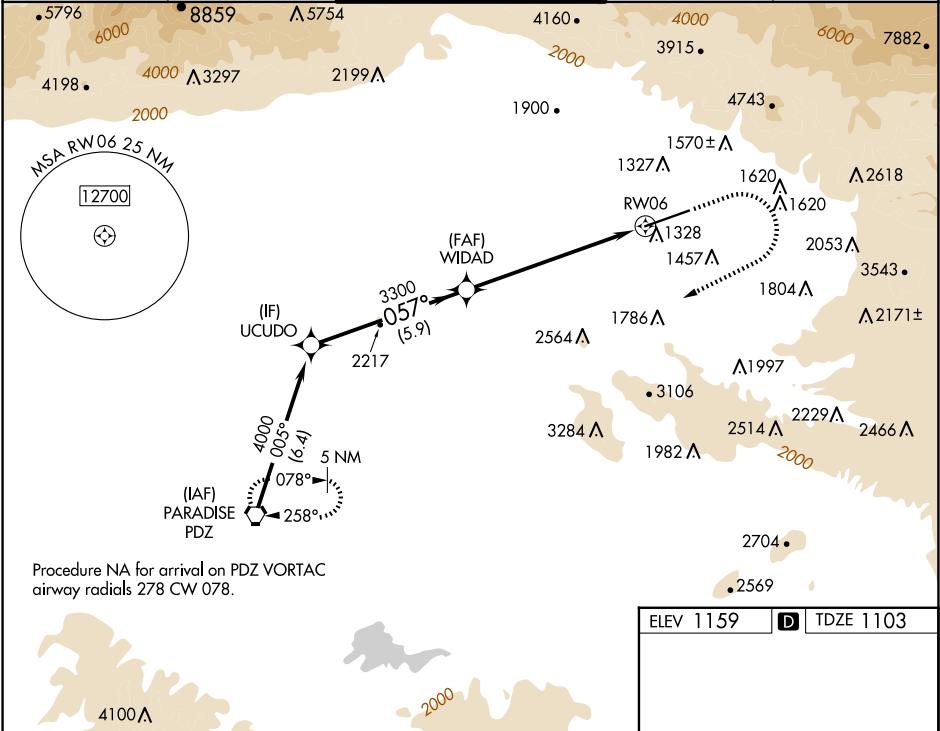
▼

⚠

Circling NA northwest of Rwy 6-24. When local altimeter setting not received, use Ontario altimeter setting and increase DA to 1426 feet and all visibilities ¼ SM; increase all MDA 80 feet and LNAV Cats C/D and Circling Cat C visibility ¼ SM.

MISSED APPROACH: Climb to 2000 then climbing right turn to 6000 direct PDZ VORTAC and hold, continue climb-in-hold to 6000.
Missed approach requires minimum climb of 340 feet per NM to 4000; if unable to meet climb gradient, see RNAV (GPS) Y RWY 6.

D-ATIS 124.175	SOCAL APP CON 127.0 318.2	SAN BERNARDINO TOWER ★ 119.45 (CTAF) 0	GND CON 121.8	UNICOM 122.975
--------------------------	-------------------------------------	--	-------------------------	--------------------------



UCUDO	WIDAD	2000	6000	PDZ
4000	3300	↑	↷	⬡
GP 3.00° TCH 51		* 1.9 NM to RWY06	* LNAV only	
3300		RWY06		
5.9 NM	4.9 NM	1.9 NM		
CATEGORY	A	B	C	D
LPV DA#	1353-¾ 250 (200-¾)			
LNAV MDA #	1740-1 637 (600-1)		1740-1¾ 637 (600-1¾)	
Ⓢ CIRCLING	1740-1 581 (600-1)		1760-1¾ 2640-3 601 (700-1¾) 1481 (1500-3)	

ELEV 1159 **D** TDZE 1103

HIRL Rwy 6-24 **0**
REIL Rwy 6 and 24 **0**