

APP CRS	Rwy Idg	10000
057°	TDZE	1103
	Apt Elev	1159

RNAV (GPS) Y RWY 6

SAN BERNARDINO INTL (SBD)

RNP APCH

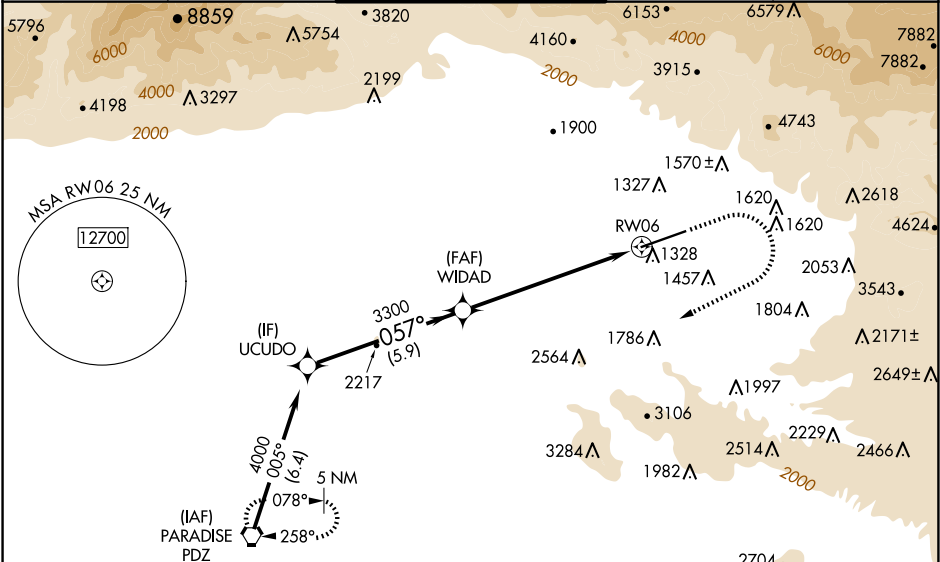
▼

Circling NA northwest of Rwy 6-24. When local altimeter setting not received, use Ontario altimeter setting and increase all MDA 80 feet.

MISSED APPROACH:

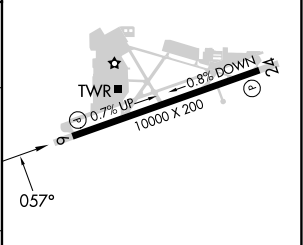
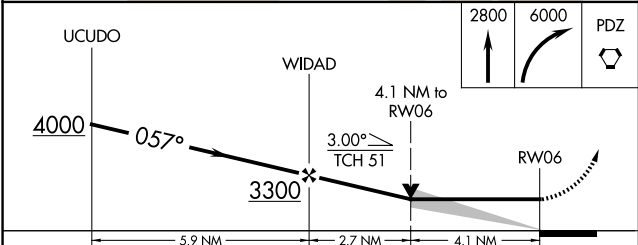
Climb to 2800 then climbing right turn to 6000 direct PDZ VORTAC and hold, continue climb-in-hold to 6000.

D-ATIS	SOCAL APP CON	SAN BERNARDINO TOWER★	GND CON	UNICOM
124.175	127.0 318.2	119.45 (CTAF) 0	121.8	122.975



Procedure NA for arrival on PDZ VORTAC  
airway radials 278 CW 078.

ELEV 1159	TDZE 1103
-----------	-----------



CATEGORY	A	B	C	D
LNAV MDA	2460-1¼ 1357 (1400-1¼)	2460-1½ 1357 (1400-1½)	2460-3 1357 (1400-3)	
CIRCLING	2460-1¼ 1301 (1400-1¼)	2460-1½ 1301 (1400-1½)	2460-3 1301 (1400-3)	2640-3 1481 (1500-3)

HIRL Rwy 6-24 0

REIL Rws 6 and 24 0