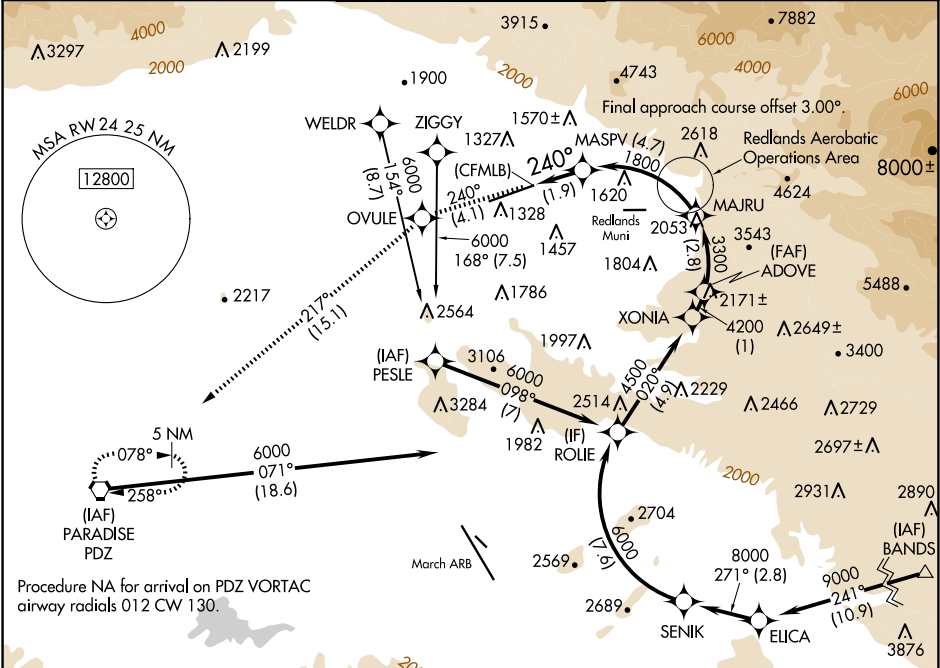


APP CRS	Rwy Idg	10000
240°	TDZE	1159
	Apt Elev	1159

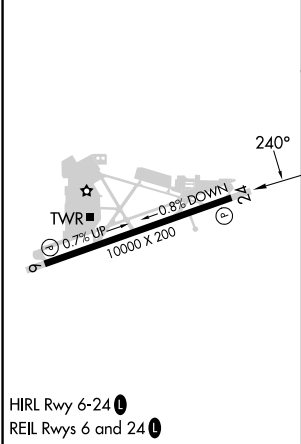
RNAV (RNP) RWY 24
SAN BERNARDINO INTL (SBD)

RNP AR APCH - GPS, RF. Authorization required.	MISSED APPROACH: Climb to 6000 on track 240° to OVULE and track 217° to PDZ VORTAC and hold, continue climb-in-hold to 6000.
For uncompensated Baro-VNAV systems, procedure NA below 2°C or above 54°C.	

D-ATIS 124.175	SOCAL APP CON 127.0 318.2	SAN BERNARDINO TOWER ★ 119.45 (CTAF) 0	GND CON 121.8	UNICOM 122.975
-------------------	------------------------------	---	------------------	-------------------



ELEV 1159	TDZE 1159
-----------	-----------



6000	OVULE	tr 217°	PDZ	
tr 240°				
(CFMLB)	1800	3300	4200	4500
1.9 NM	4.7 NM	2.8 NM	1 NM	4.9 NM
CATEGORY	A	B	C	D
RNP 0.15 DA	1520/55 361 (400-1)			
AUTHORIZATION REQUIRED				

SW-3, 10 JUL 2025 to 07 AUG 2025

SW-3, 10 JUL 2025 to 07 AUG 2025