

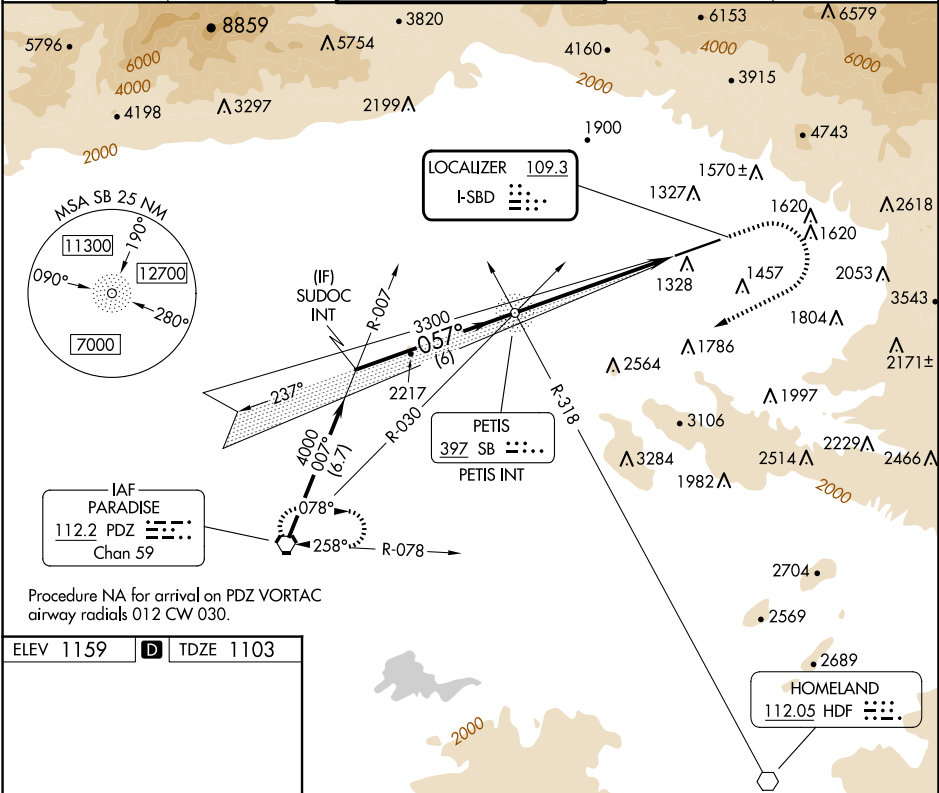
LOC I-SBD 109.3	APP CRS 057°	Rwy Idg TDZE 1103 Apt Elev 1159
---------------------------	------------------------	---

LOC Y RWY 6
SAN BERNARDINO INTL (SBD)

⚠ Circling NA northwest of Rwy 6-24. When local altimeter not received, use Ontario altimeter setting and increase all MDA 80 feet; increase S-LOC Cat B and Circling Cat B visibility ¼ SM.

MISSED APPROACH: Climb to 2700 then climbing right turn to 6000 direct PDZ VORTAC and hold, continue climb-in-hold to 6000.

D-ATIS 124.175	SOCAL APP CON 127.0 318.2	SAN BERNARDINO TOWER ★ 119.45 (CTAF) 0	GND CON 121.8	UNICOM 122.975
--------------------------	-------------------------------------	--	-------------------------	--------------------------



Procedure NA for arrival on PDZ VORTAC
airway radials 012 CW 030.

ELEV 1159

D

TDZE 1103

HIRL Rwy 6-24

REIL Rwy 6 and 24

FAF to MAP 6.1 NM

Knots	60	90	120	150	180
Min:Sec	6:06	4:04	3:03	2:26	2:02

☒ CIRCLING

2020-1¼	861 (900-1¼)	2060-3	901 (1000-3)	2640-3	1481 (1500-3)
---------	--------------	--------	--------------	--------	---------------

SUDOC INT		VGSI and descent angles not coincident (VGSI Angle 3.00/TCH 52).		2700	6000	PDZ
4000		057°		3300	3.33°	TCH 52
6 NM		6.1 NM				
CATEGORY	A	B	C	D		
S-6	2020-1¼	917 (900-1¼)	2060-3	957 (1000-3)		
<input checked="" type="checkbox"/> CIRCLING	2020-1¼	861 (900-1¼)	2060-3	901 (1000-3)	2640-3	1481 (1500-3)