

DEPARTURE ROUTE DESCRIPTION

TAKEOFF RUNWAY 6: Climb on heading 057° to 2100, then climbing right turn direct LOSOM to cross LOSOM at or above 5500, then on track 155° to cross STRIKES between 6100 and 6900 then on track 172° to ELICA, thence. . . .

AVRRY TRANSITION (JADKO1.AVRRY)

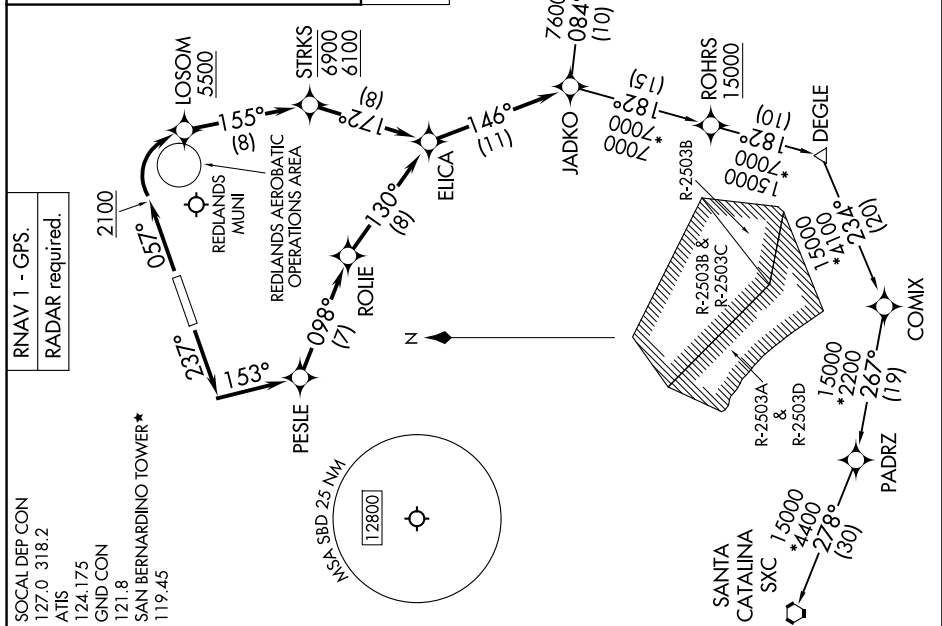
MTBAL TRANSITION (JADKO1.MTBAL)

SANTA CATALINA TRANSITION (JADKO1.SXC)

TOP ALTITUDE:

AVRRY AND MTBAL TRANSITIONS: 14000;

SANTA CATALINA TRANSITION: 15000.



TAKEOFF MINIMUMS

Rwy 6: Standard with minimum climb of 602' per NM to 5800.

Rwy 24: Standard with minimum climb of 439' per NM to 4100.

NOTE: Turbojet and turboprop aircraft only.

NOTE: Rwy 6 departures maintain at or below 210K until leaving 3500.

NOTE: Scheduled aerobic activity beginning 4.5 NM east of Rwy 6 DER/

227 NM west of LOSOM 3500 feet to 7500 feet MSI 123.05

JADKO ONE DEPARTURE (RNAV)

(JADKO1.JADKO) 16MAY24

SAN BERNARDINO, CALIFORNIA
SAN BERNARDINO INTL (SBD)