

LOC I-SBD	APP CRS	Rwy ldg	10000
109.3	057°	TDZE	1103
		Apt Elev	1159

ILS or LOC Z RWY 6

SAN BERNARDINO INTL (SBD)

⚠

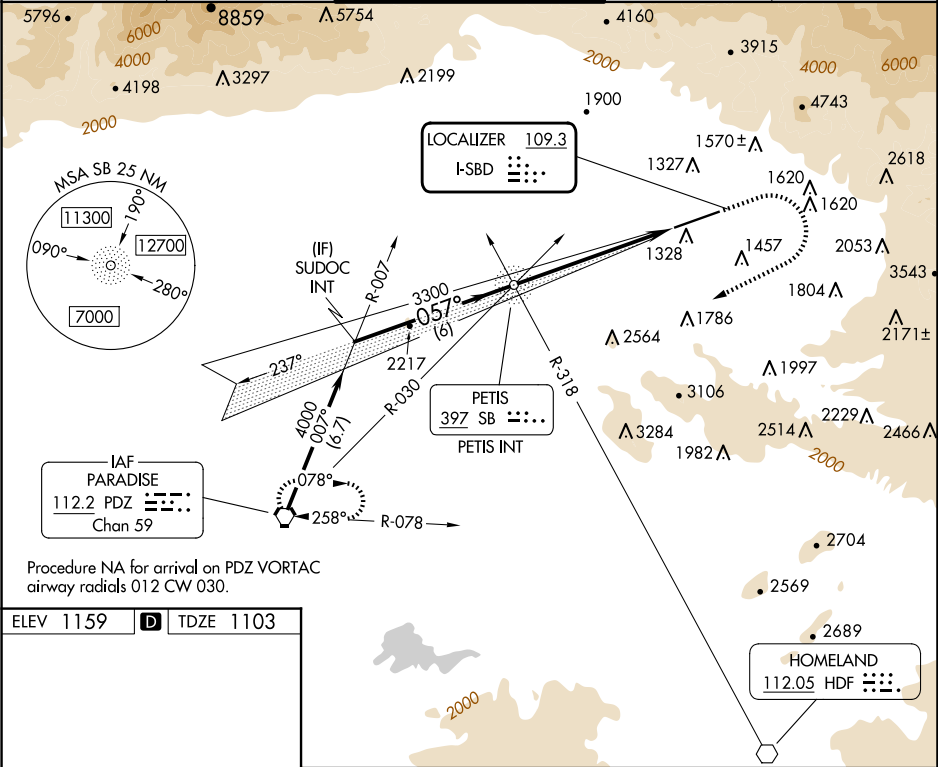
Circling NA northwest of Rwy 6-24. When local altimeter setting not received, use Ontario altimeter setting and increase DA to 1426 feet and all visibilities ¼ SM; increase all MDA 80 feet and S-LOC Cats C/D and Circling Cat C visibility ¼ SM.

MISSED APPROACH:

Climb to 2000 then climbing right turn to 6000 direct PDZ VORTAC and hold, continue climb-in-hold to 6000.

* Missed approach requires minimum climb of 340 feet per NM to 4000; if unable to meet climb gradient, see LOC Y RWY 6.

D-ATIS	SOCAL APP CON	SAN BERNARDINO TOWER ★	GND CON	UNICOM
124.175	127.0 318.2	119.45 (CTAF) 0	121.8	122.975



ELEV 1159

D

TDZE 1103

TWR

0.7% UP

0.8% DOWN

10000 X 200

057°

HIRL Rwy 6-24

REIL Rwy 6 and 24

FAF to MAP 6.1 NM

Knots	60	90	120	150	180
Min:Sec	6:06	4:04	3:03	2:26	2:02

SUDOC INT	057°		3118	
	4000		3300	
GS 3.00° TCH 51		6 NM		6.1 NM
CATEGORY	A	B	C	D
S-ILS 6*	1353-¾		250 (200-¾)	
S-LOC 6*	1740-1 637 (600-1)		1740-1¾ 637 (600-1¾)	
CIRCLING	1740-1 581 (600-1)		1760-1¾ 601 (700-1¾) 2640-3 1481 (1500-3)	