

WAAS CH <b>40002</b> <b>W21A</b>	APP CRS <b>208°</b>	Rwy Idg TDZE Apt Elev	<b>7619</b> <b>4977</b> <b>5045</b>
--	------------------------	-----------------------------	---

RNAV (GPS) RWY 21L

PRESCOTT RGNL/ERNEST A LOVE FLD (PRC)

RNP APCH - GPS.

▼

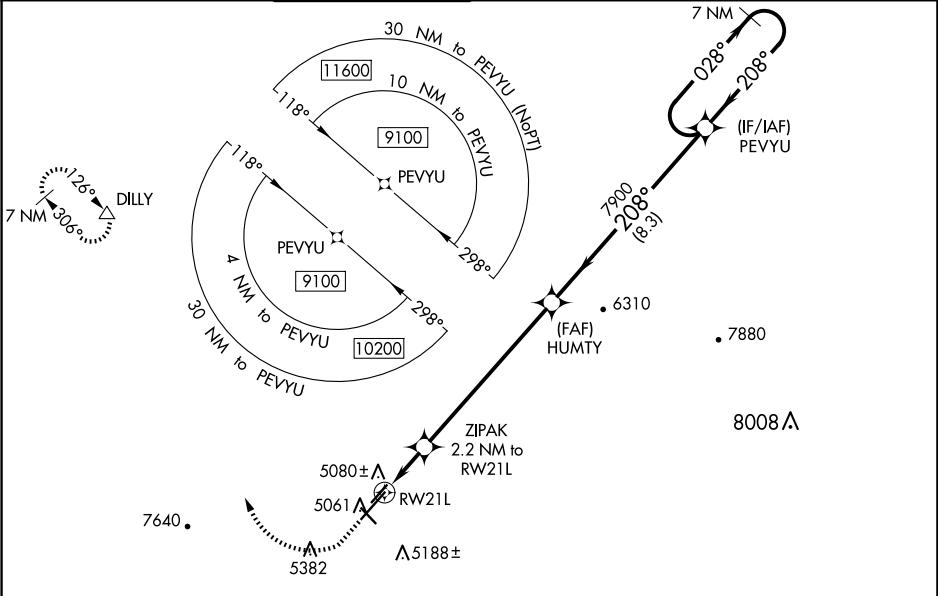
⚠

For uncompensated Baro-VNAV systems, LNAV/VNAV NA below -11°C or above 47°C. For inoperative ALS, increase LPV all Cats visibility to 1 SM, LNAV/VNAV all Cats visibility to 1½ SM, and LNAV Cat C/D visibility to 1¾ SM. Circling Rwy 3L, 12, 30 NA at night.  
# Missed approach requires a minimum climb of 345 feet per NM to 7300.

MALSR

MISSED APPROACH: Climb to 5500 then climbing right turn to 9100 direct DILLY and hold, continue climb-in-hold to 9100.

ATIS <b>127.2</b>	PHOENIX APP CON <b>133.575 281.55</b>	PRESCOTT TOWER ★ <b>125.3</b> (CTAF) <b>1 257.9</b>	GND CON <b>121.7</b>	CLNC DEL <b>119.25</b>	<b>128.75 1</b>	UNICOM <b>122.95</b>
----------------------	--	--	-------------------------	---------------------------	-----------------	-------------------------



ELEV 5045	<b>D</b>	TDZE 4977
-----------	----------	-----------

5500	9100	DILLY
*LNAV only.		
ZIPAK 2.2 NM to RW21L		
*1.5 NM to RW21L		
RW21L		
5700*		
HUMTY 7900		
PEVYU 7900		
7 NM Holding Pattern		
028° → 9100		
← 208°		
GP 3.00°		
TCH 55		

CATEGORY	A	B	C	D
LPV DA	# 5177-½ 200 (200-½)			
LPV DA	5277-½ 300 (300-½)			
LNAV/VNAV DA	5391-¾ 414 (400-¾)			
LNAV MDA	5480-½ 503 (500-½)	5480-1 503 (500-1)		
CIRCLING	5520-1 475 (500-1)	5760-1 715 (800-1)	6080-3 1035 (1100-3)	6680-3 1635 (1700-3)

MIRL Rwy 3L-21R and 3R-21L  
MIRL Rwy 12-30  
REIL Rwy 3R, 12, and 30