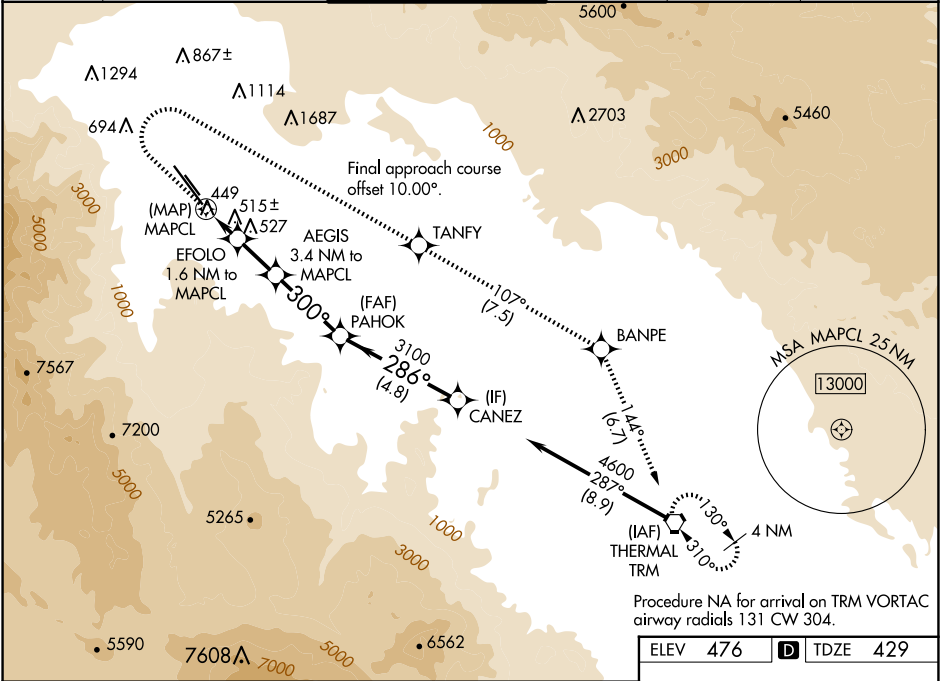


WAAS CH 50244 W31A	APP CRS 300°	Rwy Ldg TDZE Apt Elev 8500 429 476
--	------------------------	--

RNAV (GPS) Z RWY 31L

PALM SPRINGS INTL (PSP)

RNP APCH-GPS.		MISSED APPROACH: Climb to 900 then climbing right turn to 4000 direct TANFY and track 107° to BANPE and track 144° to TRM VORTAC and hold. *Missed approach requires minimum climb of 355 feet per NM to 2100.			
⚠ Circling NA southwest of Rwy 13R-31L.					
ATIS 124.65	SOCAL APP CON 126.7 370.95 135.275 251.1	PALM SPRINGS TOWER * 119.7 (CTAF) 377.05	GND CON 121.9	CLNC DEL 128.35	UNICOM 122.95



ELEV 476	TDZE 429
----------	----------

900 ↑	4000 ↗	TANFY tr 107° ✧	BANPE tr 144° ✧	TRM ⬡		
VGSI and descent angles not coincident (VGSI Angle 3.00/TCH 55).					PAHOK	
					CANZ 4600	
CATEGORY		A	B	C	D	
LP	MDA	700-1 271 (300-1)	780-1 351 (400-1)	1320-2½		891 (900-2½)
LNAV MDA*		780-1 351 (400-1)				
LNAV MDA		920-1 491 (500-1)	1180-1¼ 751 (800-1¼)	1440-3		1011 (1000-3)
CIRCLING		920-1 444 (500-1)	1180-1¼ 704 (800-1¼)	1440-3 964 (1000-3)		1760-3 1284 (1300-3)

