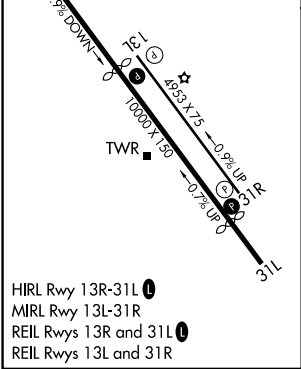
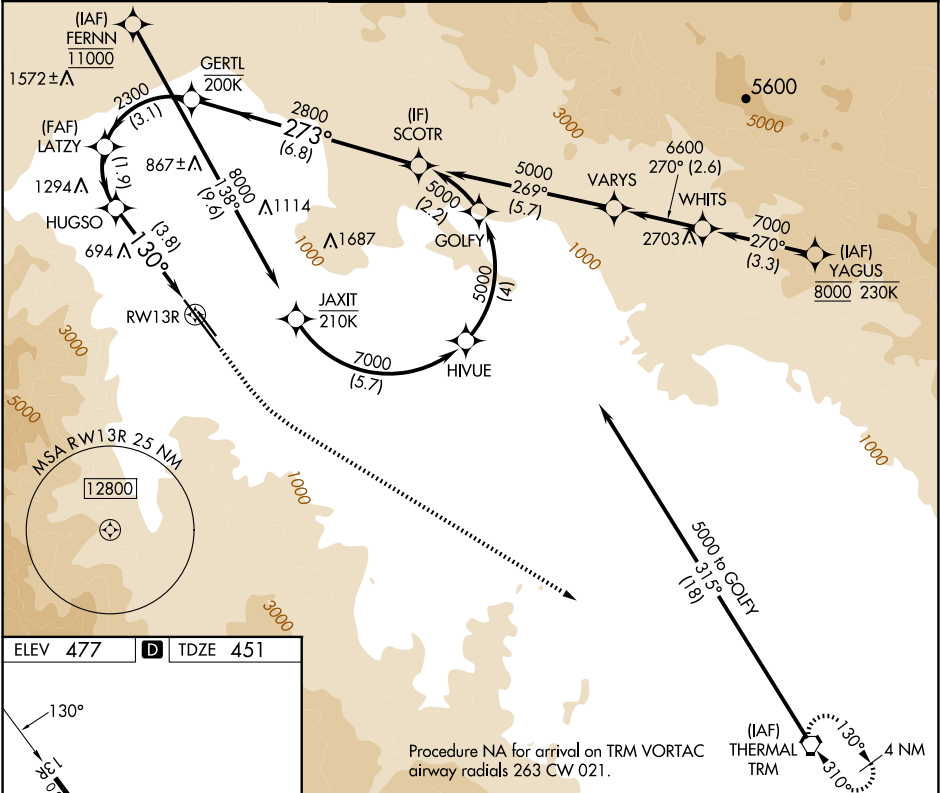


APP CRS	Rwy Ldg	6857
130°	TDZE	451
	Apt Elev	477

RNAV (RNP) Z RWY 13R

PALM SPRINGS INTL (PSP)

RNP AR APCH-GPS, RF, min RNP 0.50. Authorization required.			MISSED APPROACH: Climb to 900 then climbing left turn to 4000 direct TRM VORTAC and hold.		
▼ For uncompensated Baro-VNAV systems, procedure NA below 4°C or above 54°C.					
ATIS 124.65	SOCAL APP CON 126.7 370.95 135.275 251.1	PALM SPRINGS TOWER★ 119.7 (CTAF) 377.05	GND CON 121.9	CLNC DEL 128.35	UNICOM 122.95



SCOTR		GERTL		LATZY		HUGSO		RW13R										
5000		2800		2300		1711		310										
GP 3.00° TCH 50																		
6.8 NM		3.1 NM		1.9 NM		3.8 NM												
CATEGORY	A	B	C	D														
RNP 0.10 DA	749-7/8 298 (300-7/8)																	
RNP 0.30 DA	882-1 1/4 431 (500-1 1/4)																	
AUTHORIZATION REQUIRED																		

SW-3, 10 JUL 2025 to 07 AUG 2025

SW-3, 10 JUL 2025 to 07 AUG 2025