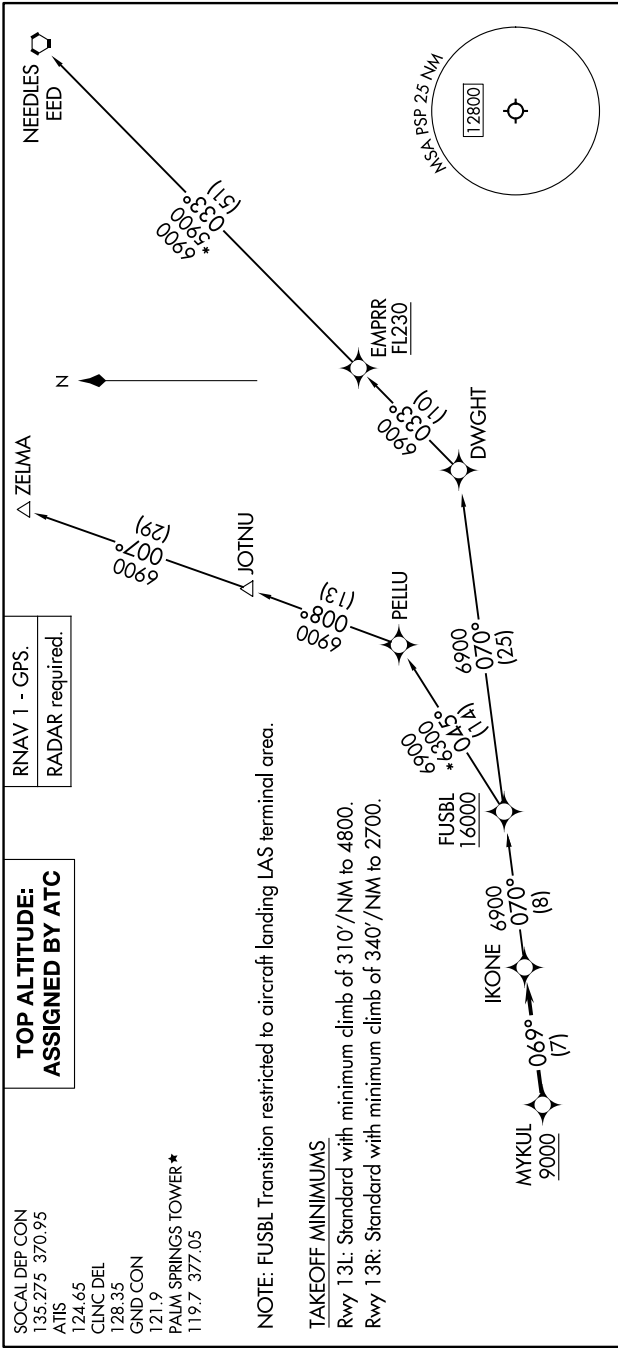


SW-3, 10 JUL 2025 to 07 AUG 2025



DEPARTURE ROUTE DESCRIPTION

TAKEOFF RUNWAYS 13L/R: Climb on heading 130° to 977, then on heading 110° or as assigned by ATC, for vectors to cross MYKUL at or above 9000, thence
 on track 069° to IKONE, then on transition. Maintain ATC assigned altitude, expect filed altitude 10 minutes after departure.

FUSBL TRANSITION (IKONE1.FUSBL)
NEEDLES TRANSITION (IKONE1.EED)
ZELMA TRANSITION (IKONE1.ZELMA)

SW-3, 10 JUL 2025 to 07 AUG 2025

NOTE: Chart not to scale.