


TACAN Y RWY 31

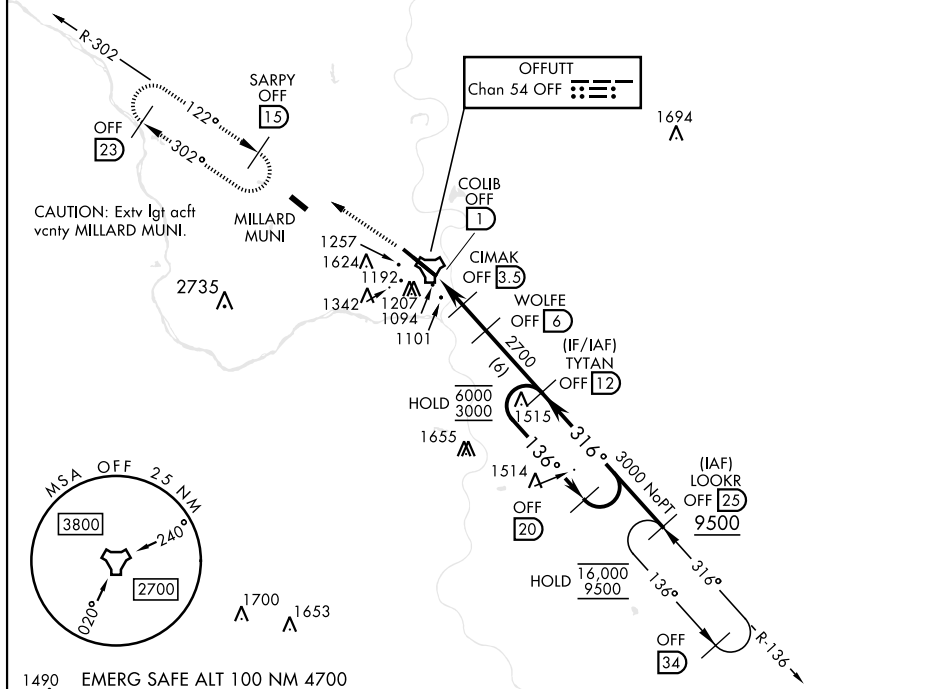
TACAN OFF Chan <b>54</b>	APCH CRS <b>316°</b>	Rwy Idg <b>10,612</b> TDZE <b>991</b> Arpt Elev <b>1048</b>
-----------------------------	-------------------------	---

[USAF]

OFFUTT AFB (KOFF)

<p><b>▼</b> * When ALS inop, increase RVR to 55, vis to 1 mile.          **Circling not authorized N of Rwy 13-31.</p>		<p>ALSF-1  </p>	<p>MISSED APPROACH: Climb to 3000 via          OFF TACAN R-302 to SARPY and hold.</p>
<p>ATIS  <b>126.025 273.5</b></p>	<p>OMAHA APP CON  <b>124.5 263.0</b> (E)  <b>135.875 354.05</b> (W)</p>	<p>TOWER  <b>123.7 279.625</b></p>	<p>GND CON  <b>121.7 289.4</b></p>

**CAUTION:** When circling to Rwy 13 at night, operational VGSI required, remain on or above VGSI glidepath until threshold.



3000  
OFF  
R-302

SARPY  
OFF  
15

WOLFE  
OFF  
6

TYTAN  
OFF  
12

OFF  
20

6000  
3000

316°

136°

316°

2700

1940

≤2.82°  
TCH 56

0.6 2.5 NM 2.5 NM

CATEGORY	A	B	C	D	E
S-31*	1360/24 368 (400-1/2)	1360/40 368 (400-3/4)			
CIRCLING**	1500-1 452 (500-1)	1560-1 512 (600-1)	1660-1 3/4 612 (700-1 3/4)	1940-3 892 (900-3)	

ELEV 10488

TDZE 991

Rwy 13 ldg 10,695'

Rwy 31 ldg 10,612'

13

TWR

11,703 ± 150

316°

0.7% UP

13

HIRL Rwy 13-31

Rwy 13-31 ALS nstd