

OMAHA, NEBRASKA

WAAS CH 91357 W31A	APCH CRS 307°	Rwy ldg TDZE Arpt Elev	10,612 991 1048
--------------------------	------------------	------------------------------	-----------------------

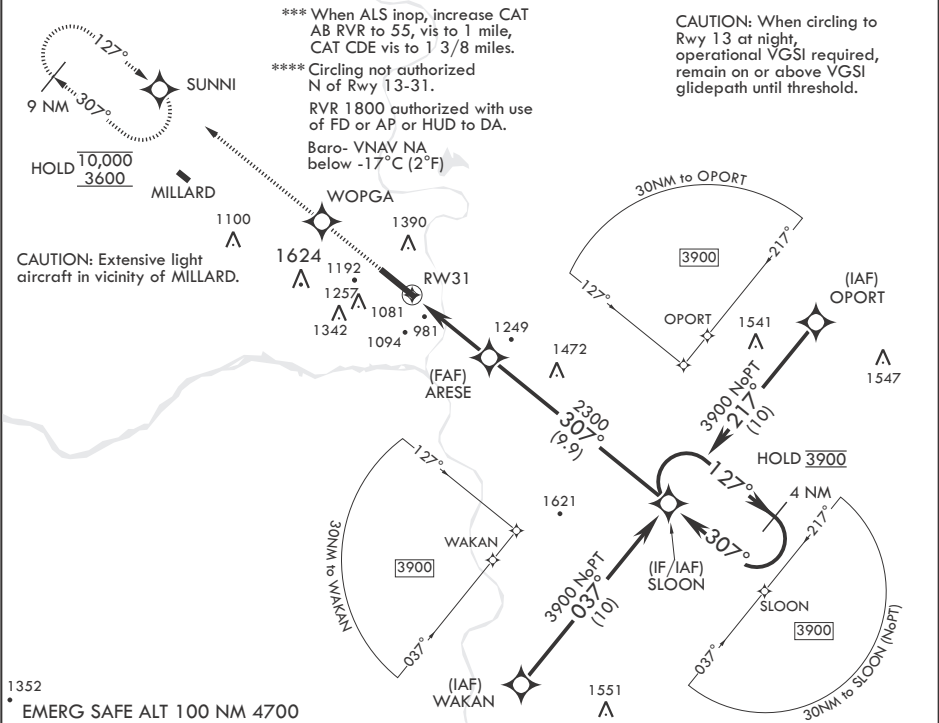
- (USAF)

RNAV (GPS) RWY 31

OFFUTT AFB (KOFF)

RNP APCH-GPS	ALSF-1	MISSED APPROACH: Climb to 3600 direct WOPGA then track 307° to SUNNI and hold.
▼ * When ALS inop, increase RVR to 40 and vis to 3/4 mile. ** When ALS inop, increase RVR to 60 and vis to 1 1/8 miles.		

ATIS 126.025 273.5	OMAHA APP CON/DEP CON 124.5 263.0 E 135.875 354.05 W	TOWER 123.7 279.625	GND CON 121.7 289.4
-----------------------	--	------------------------	------------------------



3600

↑

WOPGA

✧

tr

307°

SUNNI

✧

4.3 NM

4.3 NM

ARESE

307°

2300

1.4 NM to RW31

1.4 NM to RW31

RW31

↶

4 NM Holding Pattern

127°

307°

3900

3900

GP 2.80°

TCH 58

CATEGORY	A	B	C	D	E
LPV DA*	1192/24		200	(200-½)	
LNAV/VNAV DA**	1382/35		390	(400-¾)	
LNAV MDA***	1440/24 448 (400-½)		1440/45 448 (400-¾)		
CIRCLING****	1500-1 452 (500-1)	1560-1 512 (600-1)	1660-1 612 (700-1¾)	1940-3 892 (900-3)	

ELEV 1048

TDZE 991

Rwy 13 ldg 10,695'

Rwy 31 ldg 10,612'

BCN

TWR

11,703 x 130

0.7% UP

307°

HIRL all Rwys

Rwy 13-31 ALS nstd

OMAHA, NEBRASKA

41°07'N - 95°55'W

OFFUTT AFB (KOFF)

Amdt 1 22FEB24

RNAV (GPS) RWY 31

NC-2, 10 JUL 2025 to 07 AUG 2025

NC-2, 10 JUL 2025 to 07 AUG 2025